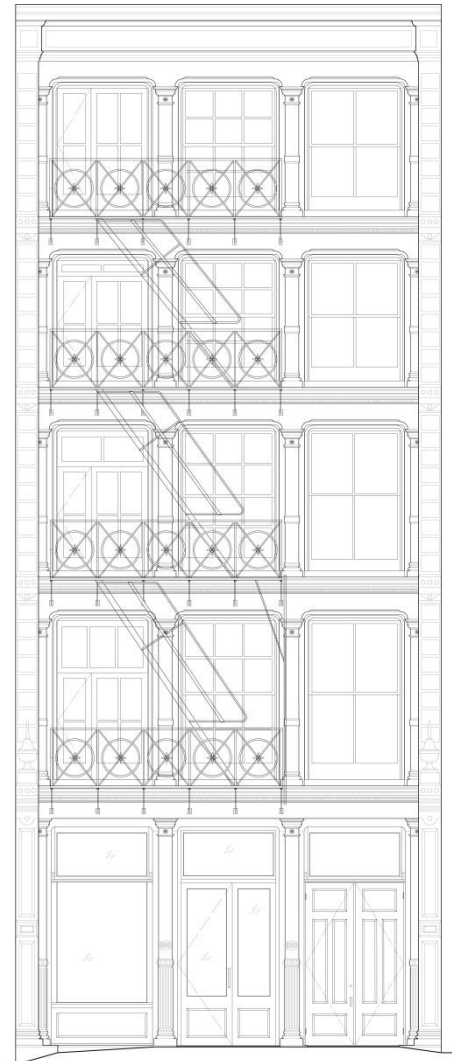


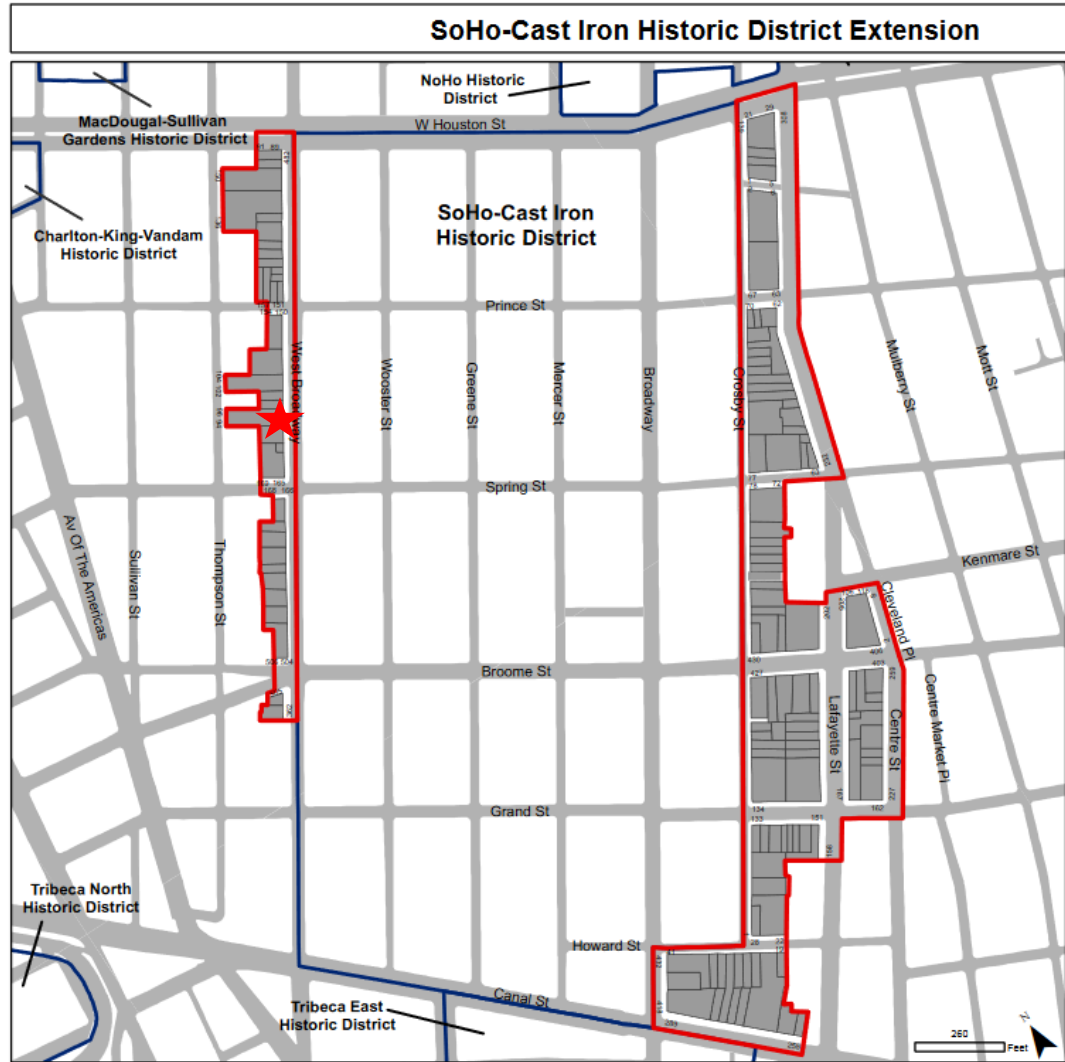
422 WEST BROADWAY, MANHATTAN

PROPOSAL FOR A MODIFICATION OF USE AND BULK



422 WEST BROADWAY, MANHATTAN

PROPOSAL FOR A MODIFICATION OF USE AND BULK



422 WEST BROADWAY, MANHATTAN

PROPOSAL FOR A MODIFICATION OF USE AND BULK



422 West Broadway Building Information:

Address: 422 West Broadway, New York
Borough: Manhattan

Tax Block: 502
Lot: 33

Landmark District: SoHo Cast Iron Historic District Extension

Zoning: M1-5A
Zoning Map #12A

Style: Italianate

422 WEST BROADWAY: HISTORIC CONTEXT



422 West Broadway, 1917.
(Municipal Archive)



422 West Broadway, 1940s Tax Photo.
(Municipal Archive)

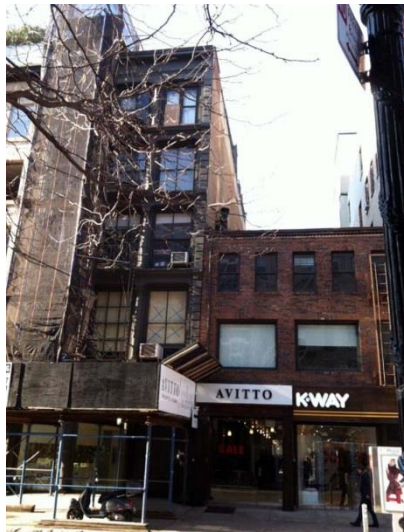


422 West Broadway, 1970.
(Museum of the City of New York)



422 West Broadway, 2010.
(NYC LPC Designation Photo)

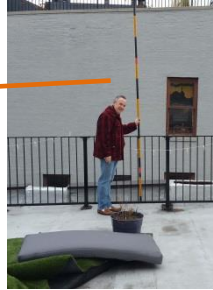
422 WEST BROADWAY: ROOFTOP ADDITION MOCK-UP APPROVED NOV. 2012



422 WEST BROADWAY: STORY POLE MOCK-UP VERIFICATION



North Corner – First Set-Back



North Corner – Second Set-Back



North Corner – Roof Peak



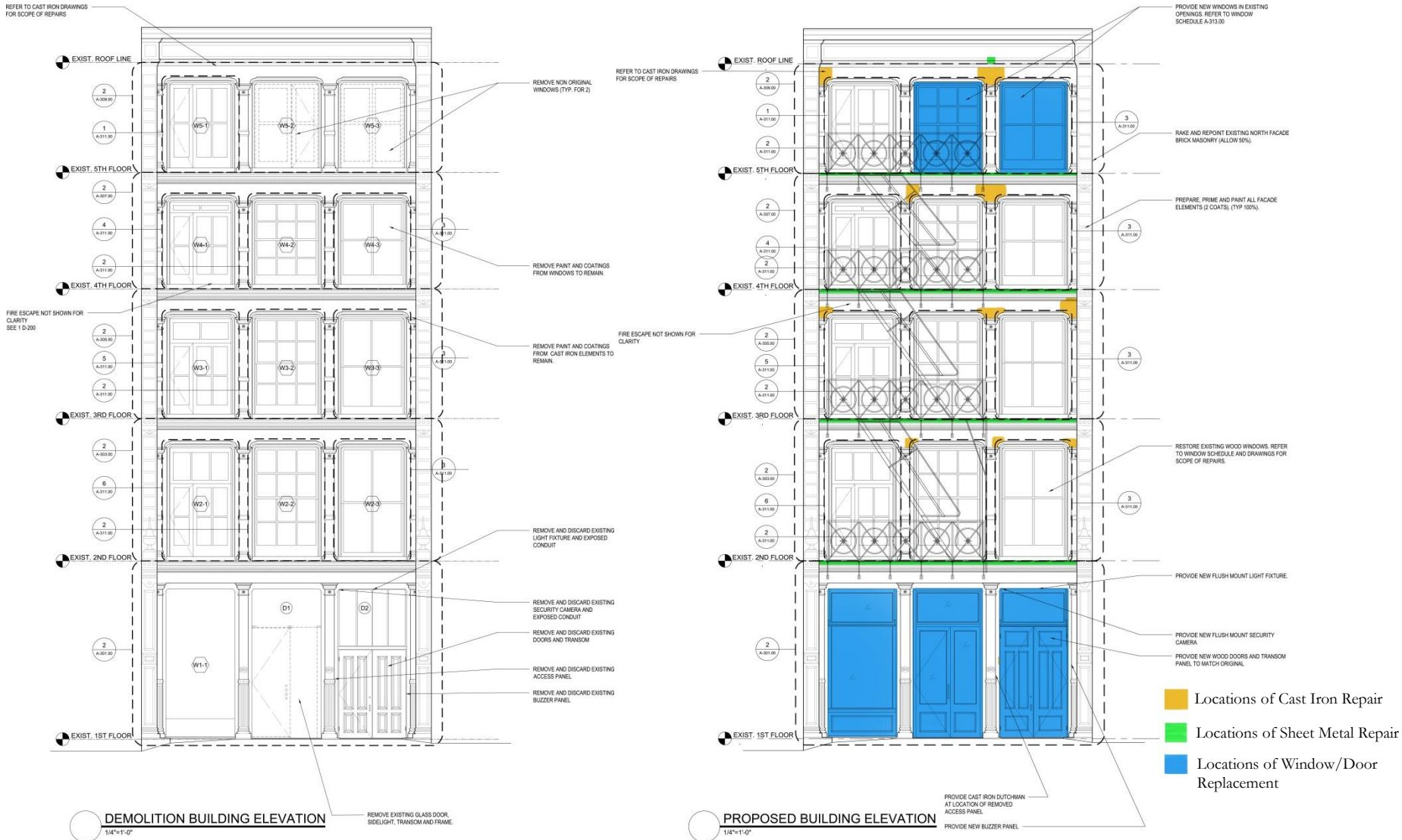
South Corner – First Set-Back



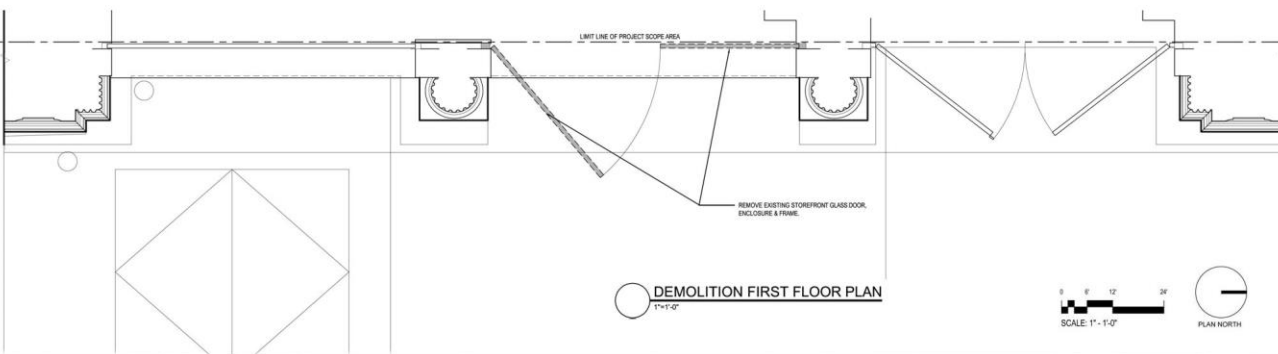
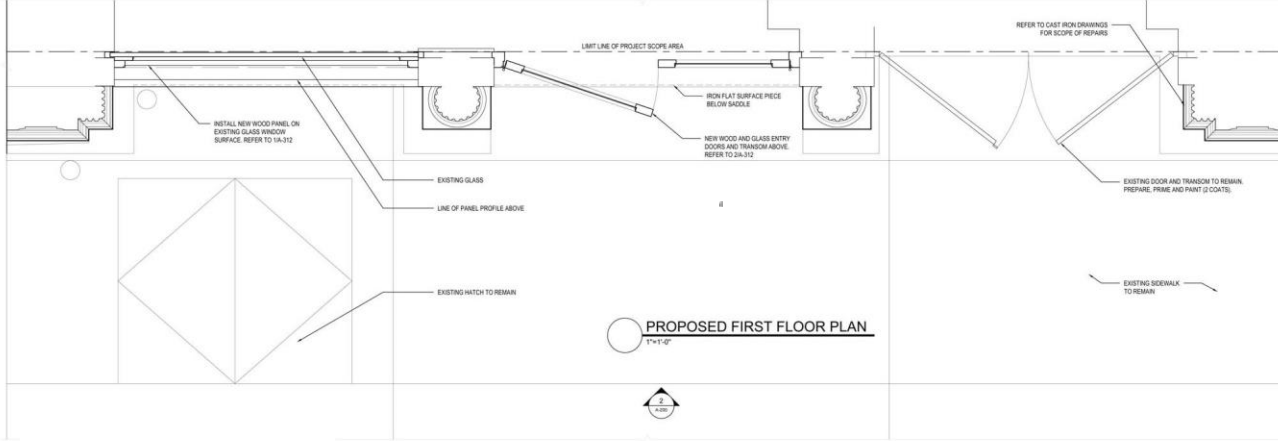
422 WEST BROADWAY: HISTORIC REFERENCE: ELEVATIONS



422 WEST BROADWAY: DRAWINGS: DEMO AND PROPOSED ELEVATIONS



422 WEST BROADWAY: DRAWINGS: STOREFRONT PLANS



JHPA
JAN HIRD POKORNY ASSOCIATES
100 WEST 40TH STREET, 4TH FLOOR
NEW YORK, NY 10018
TELEPHONE 212-759-4442 FACSIMILE 212-759-6840

Condi Building
Restoration
422 West Broadway
New York, NY

DRAWING PREPARED BY AN HIRD POKORNY ASSOCIATES ARCHITECTURE, PLANNING AND INTERIOR DESIGN OFFICE. ALL DIMENSIONS MUST BE VERIFIED BY CONTRACTOR AND THE CONTRACTOR MUST BE NOTIFIED OF ANY DISCREPANCIES BEFORE PROCEEDING WITH THE CONSTRUCTION. DO NOT SCALE DRAWINGS. JHPA, INC. No. 473-01

Drawing Title

PROPOSED FIRST FLOOR PLAN

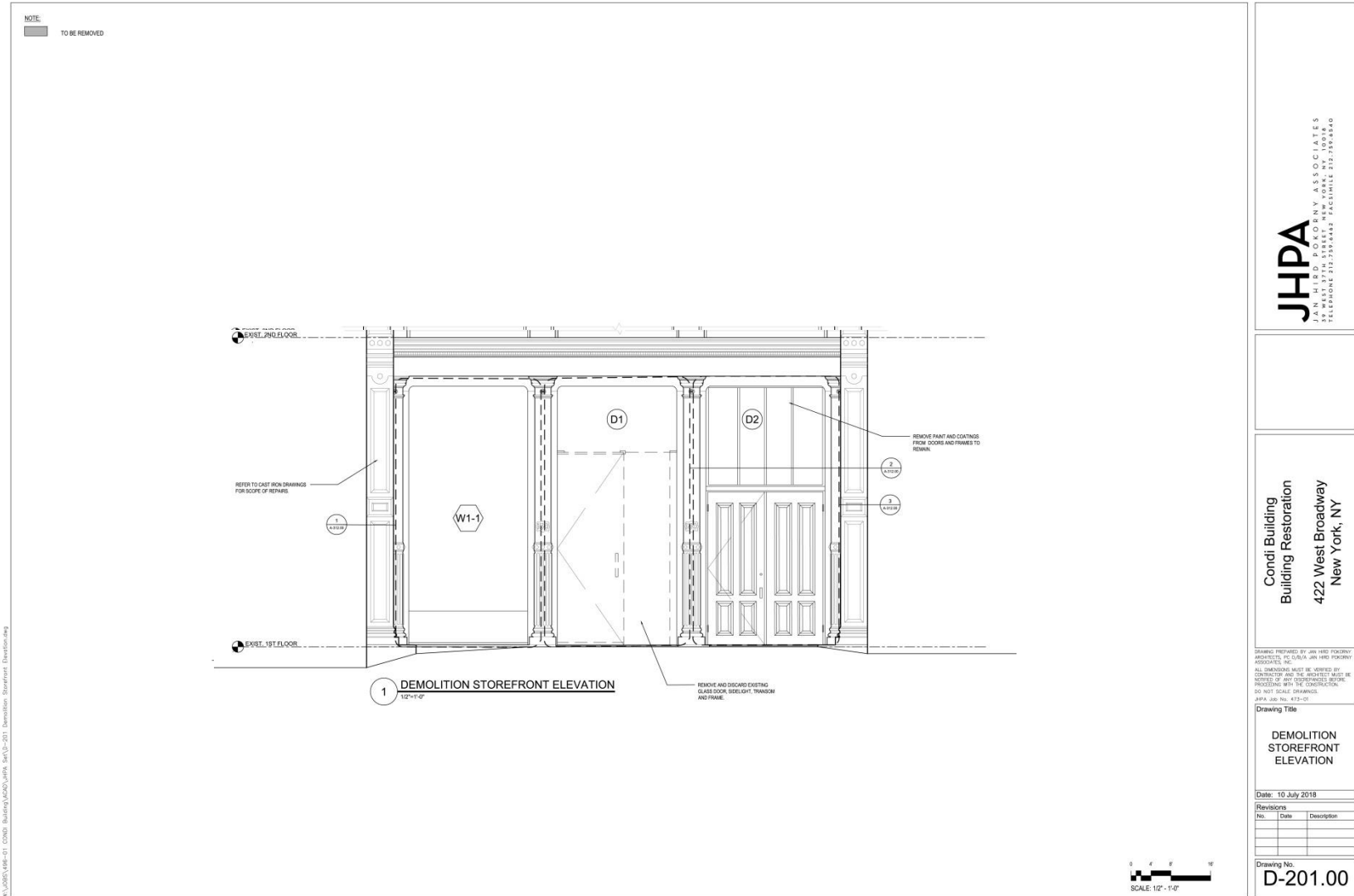
Date: 10 July 2018

Revisions	No.	Date	Description

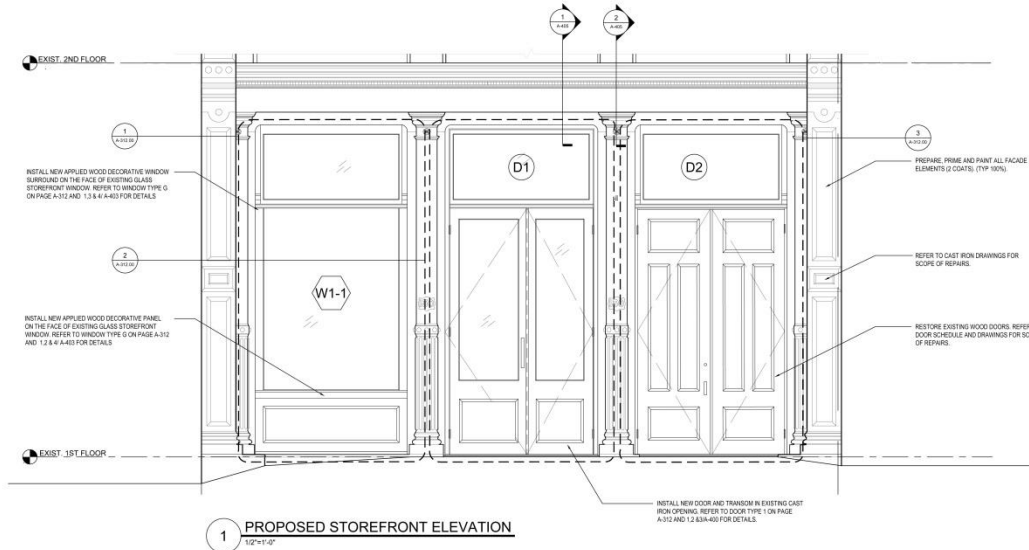
Drawing No. **A-100.00**

4/14/2018 09:44:01 C:\000 - Building\422W\422W_04\A-100 - Proposed First Floor Plan.dwg

422 WEST BROADWAY: DRAWINGS: EXISTING STOREFRONT



422 WEST BROADWAY: DRAWINGS: PROPOSED STOREFRONT



JHPA
JAN HIRD POKORNY ASSOCIATES
100 TRINITY PLACE, 10TH FLOOR
NEW YORK, NY 10036
TELEPHONE 212.335.6443 FACSIMILE 212.750.9540

Condi Building
Building Restoration
422 West Broadway
New York, NY

DRAWING PREPARED BY JAN HIRD POKORNY ASSOCIATES, 100 TRINITY PLACE, NEW YORK, NY 10036. ALL DIMENSIONS MUST BE VERIFIED BY CONTRACTOR AND THE ARCHITECT MUST BE NOTICED OF ANY DISCREPANCIES BEFORE PROCEEDING WITH THE CONSTRUCTION. DO NOT SCALE DIMENSIONS. JHPA JOB NO. 473-01

Drawing Title
PROPOSED STOREFRONT ELEVATION

Date: 10 July 2018

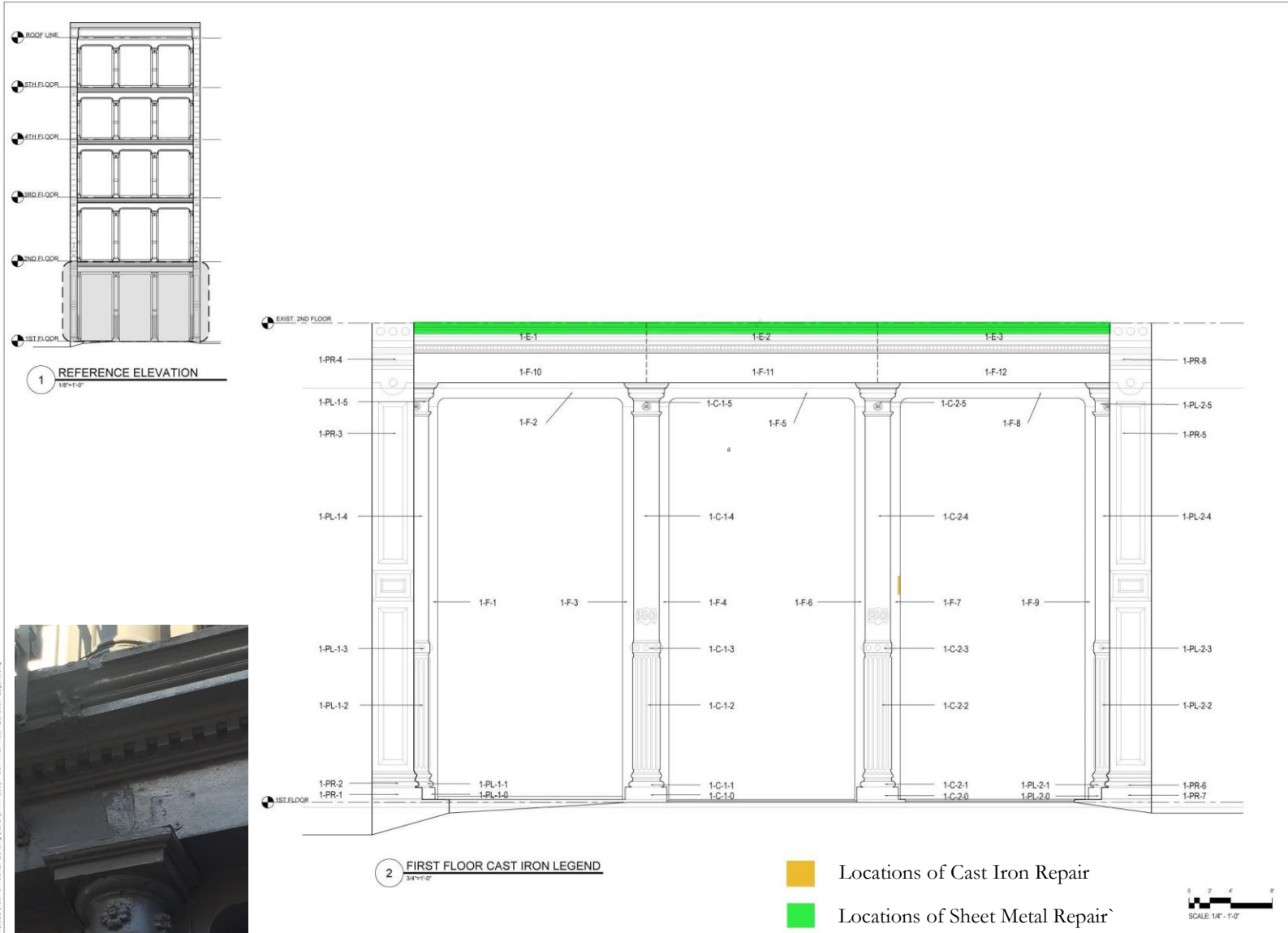
Revisions	No.	Date	Description

Drawing No.
A-201.00



C:\Users\jhpokorny\appdata\local\temp\AutoCAD\AutoCAD_2017_Progresed_Storefront_Elevation.dwg 2.dwg

422 WEST BROADWAY: DRAWINGS: GROUND FLOOR CAST IRON REPAIR



JHPA
JAN HIRD POKORNY ASSOCIATES
39 WEST 37TH STREET, NEW YORK, NY 10018
TELEPHONE 212-758-6483 FACSIMILE 212-758-6480

Condi Building
Building Restoration
422 West Broadway
New York, NY

DRAWING PREPARED BY JAN HIRD POKORNY ASSOCIATES, INC./JHPA JAN HIRD POKORNY ASSOCIATES, INC.
ALL DIMENSIONS MUST BE REFERRED TO THE CONTRACT AND THE ARCHITECT MUST BE CONSULTED FOR ANY AND ALL DIMENSIONAL REQUIREMENTS. PROCEEDING WITH THE CONSTRUCTION OF THIS DRAWING IS AT THE CONTRACTOR'S RISK.
DO NOT SCALE DRAWINGS.
JHPA Job No. 473-01

Drawing Title

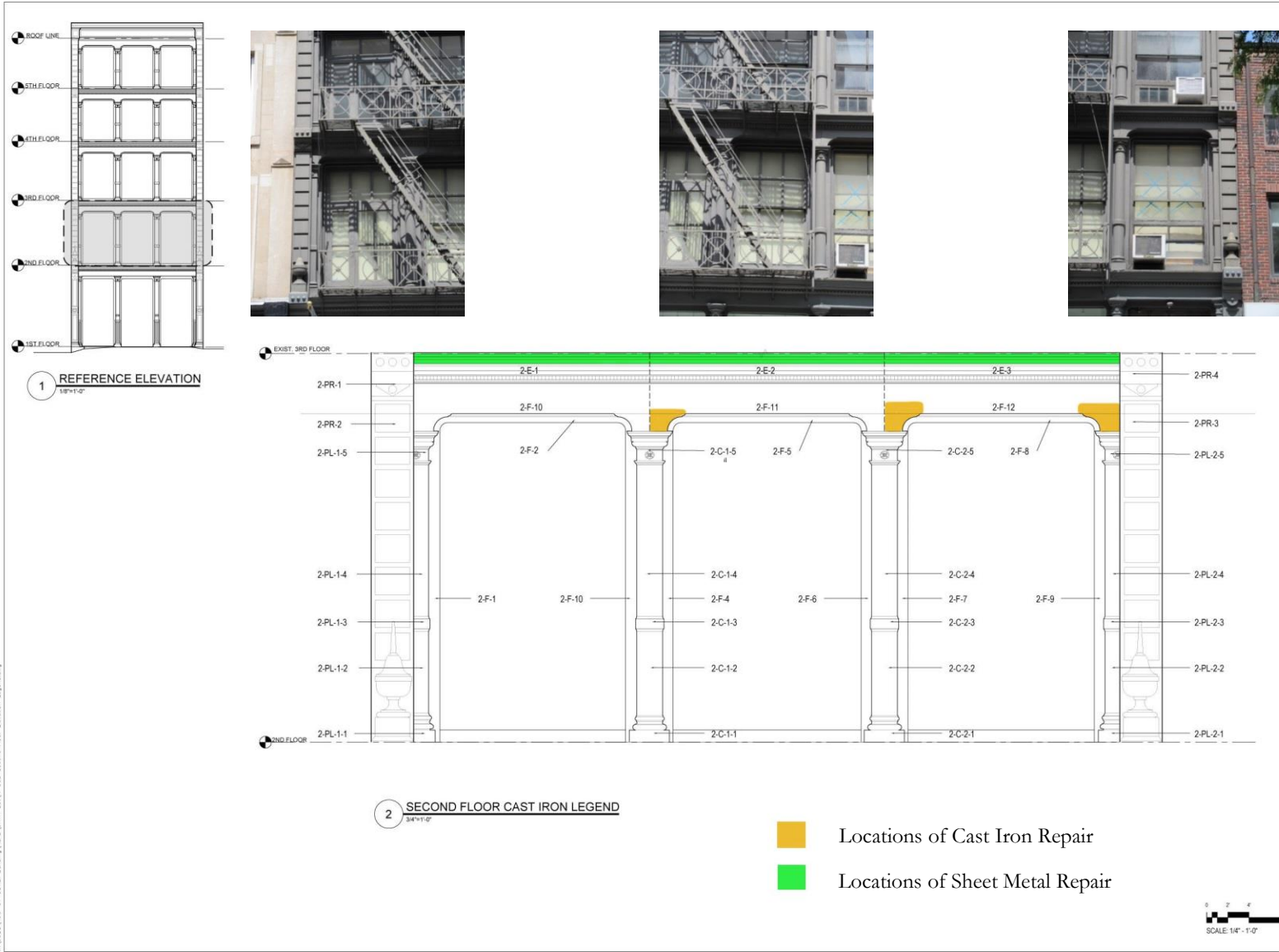
FIRST FLOOR
CAST IRON
LEGEND

Date: 10 July 2018

Revisions		
No.	Date	Description

Drawing No.
A-301.00

422 WEST BROADWAY: DRAWINGS: FIRST FLOOR CAST IRON REPAIR



JHPA
JAN HIRD POKORNY ASSOCIATES
10 WEST 37TH STREET, NEW YORK, NY 10018
TELEPHONE 212.759.6442 FACSIMILE 212.759.6540

Condi Building
Building Restoration
422 West Broadway
New York, NY

DRAWING PREPARED BY: JAN HIRD POKORNY ARCHITECTS, P.C./JHPA, AND HIRD POKORNY ASSOCIATES, P.A.
ALL DIMENSIONS MUST BE VERIFIED BY CONTRACTOR AND THE ARCHITECT MUST BE NOTICED OF ANY DISCREPANCIES BEFORE PROCEEDING WITH THE CONSTRUCTION.
DO NOT SCALE DRAWINGS.
JHPA Job No. 422-01

Drawing Title

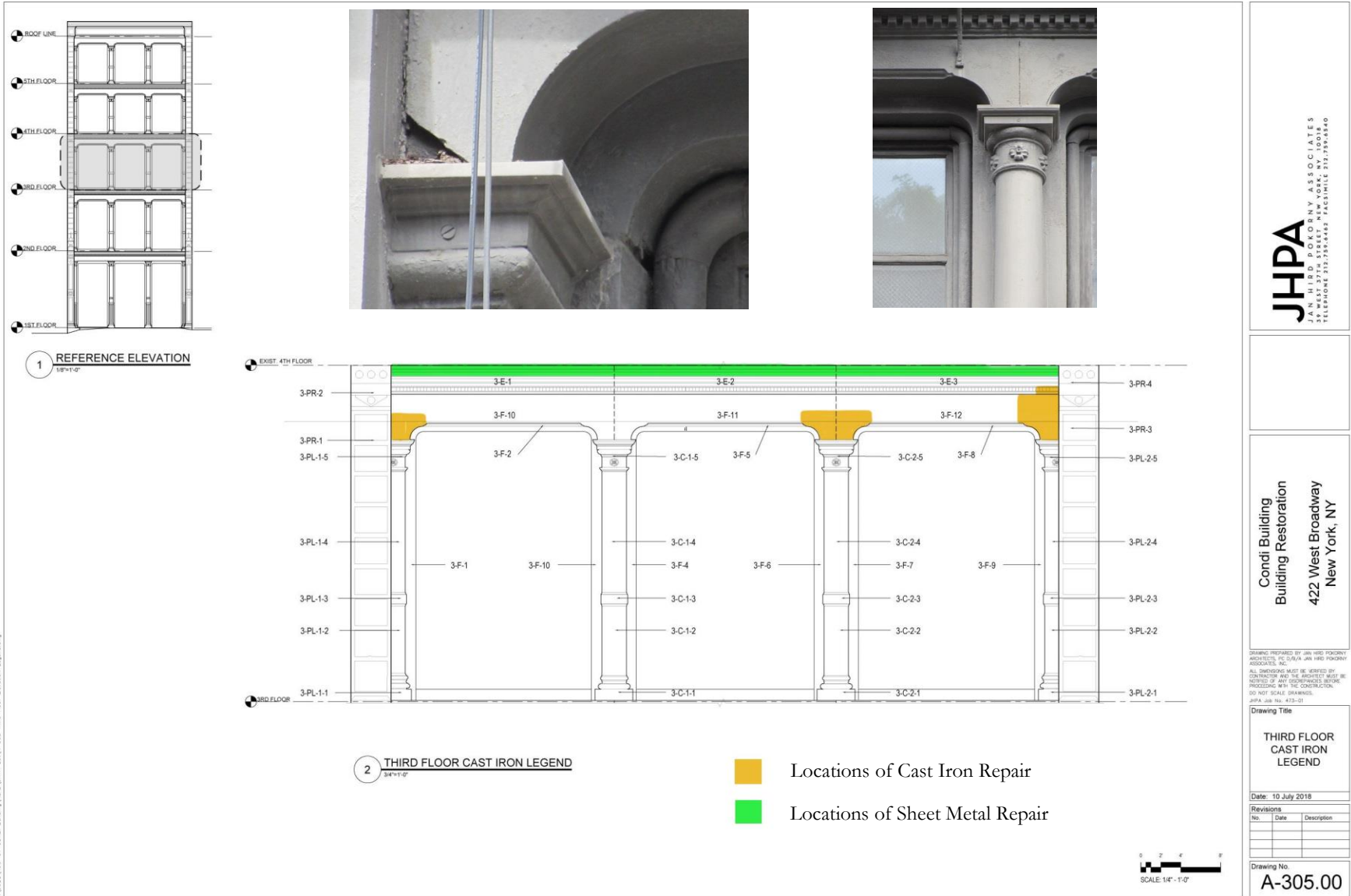
SECOND FLOOR CAST IRON LEGEND

Date: 10 July 2018

Revisions	No.	Date	Description

Drawing No.
A-303.00

422 WEST BROADWAY: DRAWINGS: SECOND FLOOR CAST IRON REPAIR



JHPA
JAN HIRD POKORNY ASSOCIATES, INC.
34 WEST 37TH STREET, NEW YORK, NY 10018
TELEPHONE 212-759-6442 FACSIMILE 212-759-6440

Cond Bldg
Building Restoration
422 West Broadway
New York, NY

DRAWING PREPARED BY JAN HIRD POKORNY ARCHITECTS, P.C. (JHPA) JAN HIRD POKORNY ASSOCIATES, INC.
ALL DIMENSIONS MUST BE CHECKED BY CONTRACTOR AND THE ARCHITECT MUST BE NOTIFIED OF ANY DISCREPANCIES BEFORE PROCEEDING WITH THE CONSTRUCTION.
DO NOT SCALE DRAWINGS.
JHPA, INC. No. 472-01

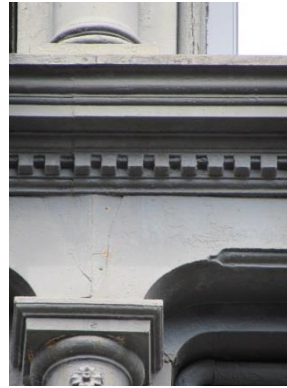
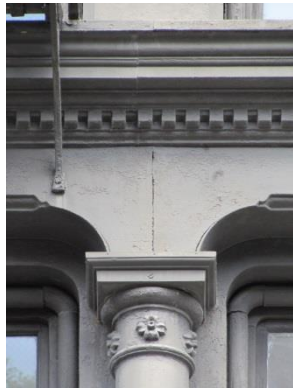
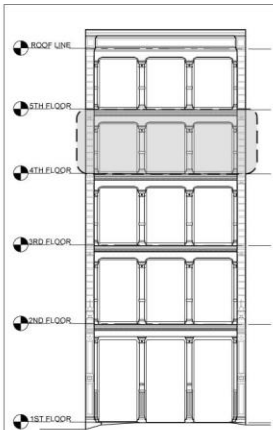
**THIRD FLOOR
CAST IRON
LEGEND**

Date: 10 July 2016

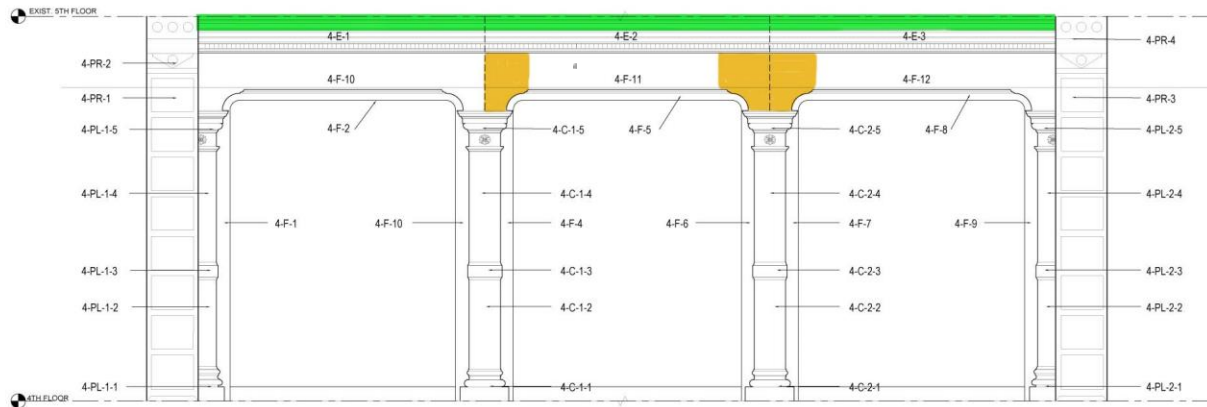
Revisions	No.	Date	Description

Drawing No. **A-305.00**

422 WEST BROADWAY: DRAWINGS: THIRD FLOOR CAST IRON REPAIR



1 REFERENCE ELEVATION
1/8"=1'-0"



2 FOURTH FLOOR CAST IRON LEGEND
3/16"=1'-0"

- Locations of Cast Iron Repair
- Locations of Sheet Metal Repair

0 2 4 8
SCALE: 1/4" = 1'-0"

JHPA
JAN HIRD POKORNY ASSOCIATES
TELEPHONE 315.759.4442 FACSIMILE 315.759.4840

Condi Building
Building Restoration
422 West Broadway
New York, NY

DRAWING PREPARED BY JAN HIRD POKORNY
ARCHITECTS, INC. (JHPA) AND HIRSH POKORNY
ASSOCIATES, INC. (HPA).
ALL DIMENSIONS MUST BE VERIFIED BY
CONTRACTOR WITH THE SUBMITTER PRIOR TO
PROCEEDING WITH THE CONSTRUCTION.
DO NOT SCALE DRAWINGS.
DATE: JULY 10, 2018

Drawing Title

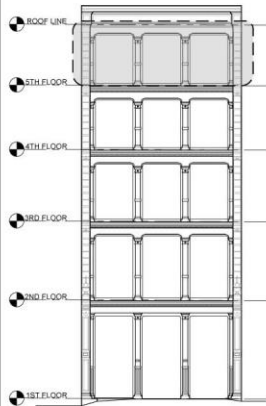
FOURTH FLOOR
CAST IRON
LEGEND

Date: 10 July 2018

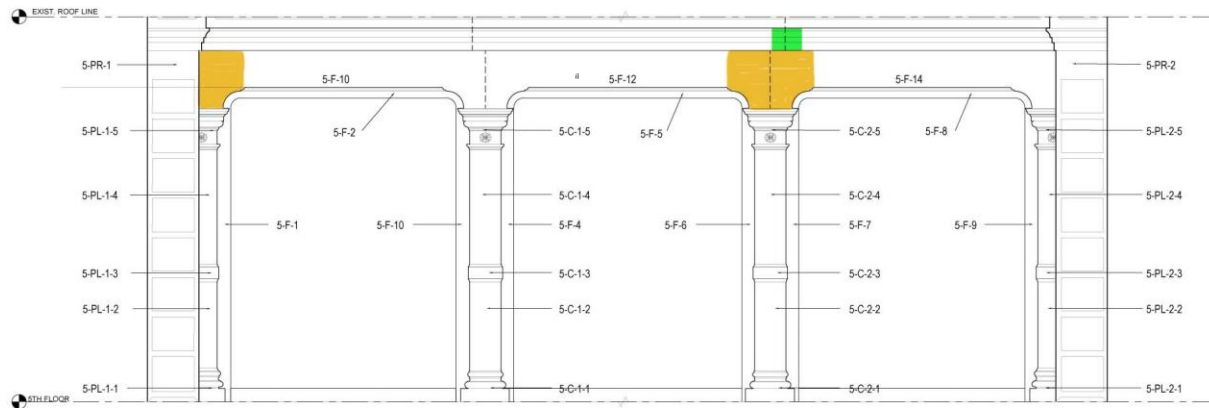
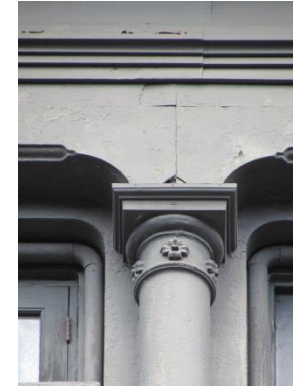
Revisions	No.	Date	Description

Drawing No.
A-307.00

422 WEST BROADWAY: DRAWINGS: FOURTH FLOOR CAST IRON REPAIR



1 REFERENCE ELEVATION
1/8"=1'-0"



2 FIFTH FLOOR CAST IRON LEGEND
3/4"=1'-0"

Locations of Cast Iron Repair
Locations of Sheet Metal Repair



JHPA
JAN HIRD POKORNY ASSOCIATES
30 WEST 37TH STREET, NEW YORK, NY 10018
TELEPHONE 212-259-6462 FACSIMILE 212-759-6540

Condi Building
Building Restoration
422 West Broadway
New York, NY

DRAWING PREPARED BY: JAN HIRD POKORNY
ARCHITECTS P.C./JHPA, JAN HIRD POKORNY
ASSOCIATES, INC.
ALL DIMENSIONS MUST BE GIVEN BY
CONTRACTOR AND THE ARCHITECT MUST BE
NOTICED OF ANY DISCREPANCIES BEFORE
PROCEEDING WITH THE CONSTRUCTION.
DO NOT SCALE DRAWINGS.
JHPA Job No. 413-01

Drawing Title

FIFTH FLOOR
CAST IRON
LEGEND

Date: 10 July 2018

Revisions	No.	Date	Description

Drawing No.

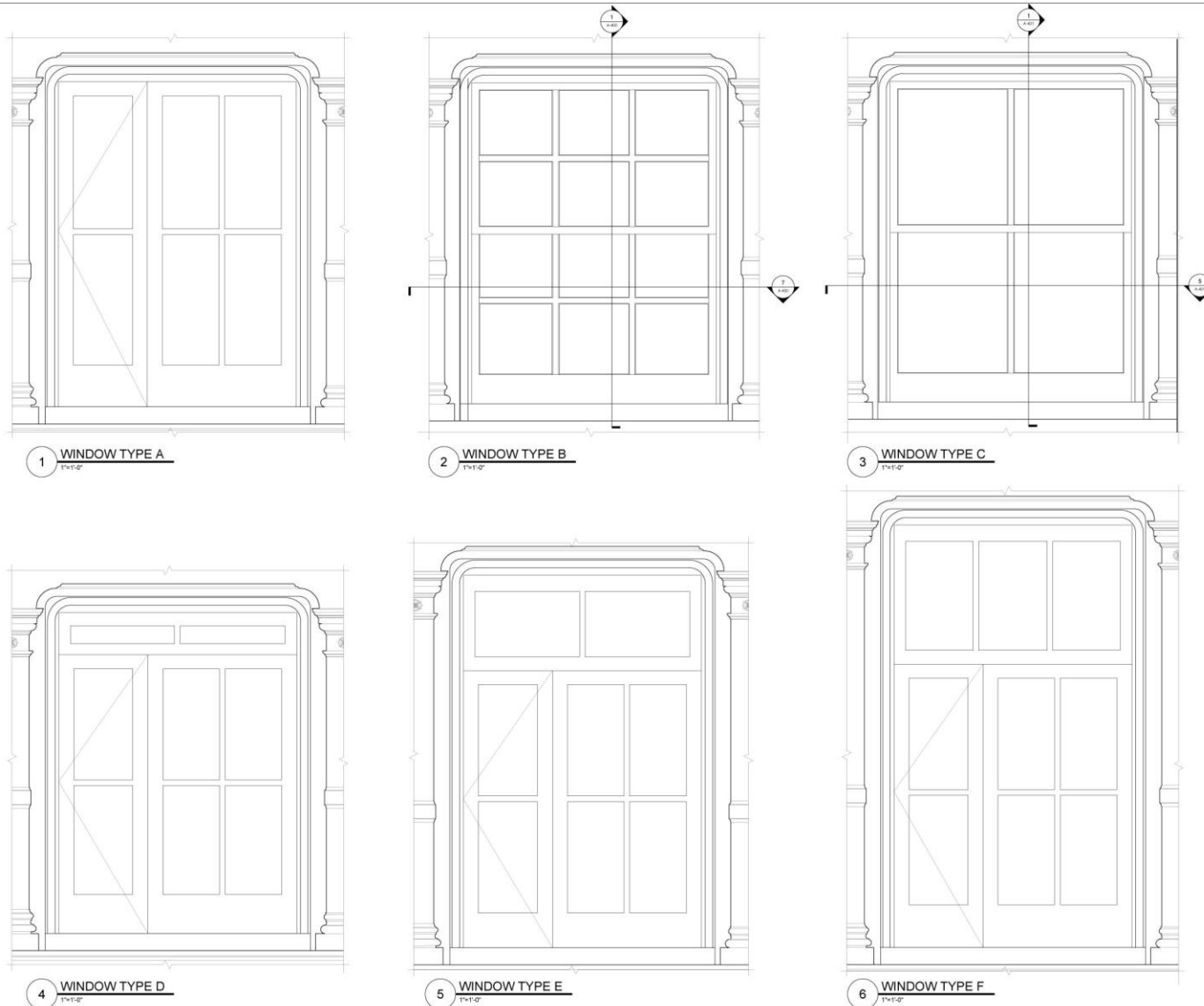
A-309.00

W:\JHPA\18-01 CONDI Building\CONDI_Bldg_S&P\A-309 Final Floor Elevation Legend.dwg

**422 WEST BROADWAY:
HISTORIC REFERENCE: WINDOWS**



422 WEST BROADWAY: DRAWINGS: WINDOW DETAILS



JHPA
JAN HIRD POKORNY ASSOCIATES
20 WEST 37TH STREET, NEW YORK, NY 10018
TELEPHONE 212.759.4442 FACSIMILE 212.759.4840

Condi Building
Building Restoration
422 West Broadway
New York, NY

DRAWING PREPARED BY JAN HIRD POKORNY
ARCHITECTS, PC (JHPA), JAN HIRD POKORNY
ASSOCIATES, PC
ALL DIMENSIONS MUST BE VERIFIED BY
CONTRACTOR AND THE ARCHITECT BEFORE
PROCEEDING WITH THE CONSTRUCTION.
DO NOT SCALE DRAWINGS.
JHPA, INC. FILE #13-01

Drawing Title

WINDOW
TYPES

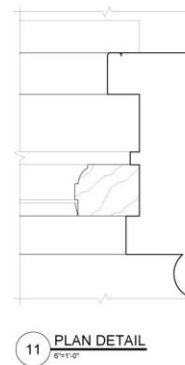
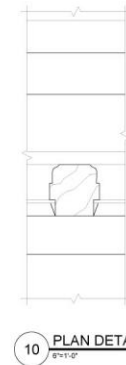
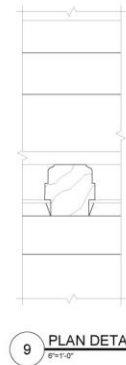
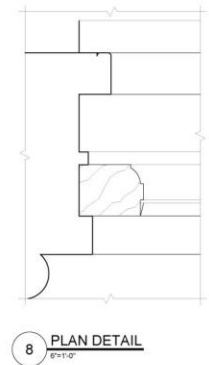
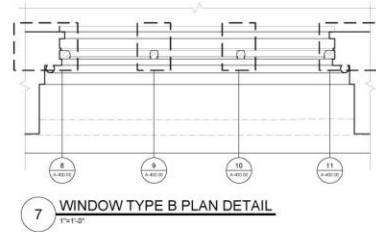
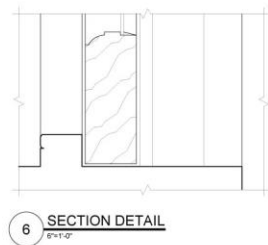
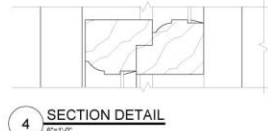
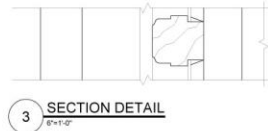
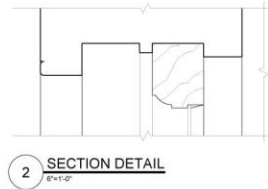
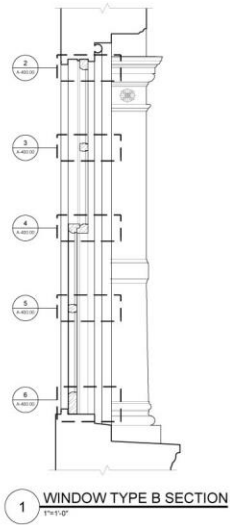
Date: 10 July 2016

Revisions		
No.	Date	Description

Drawing No.
A-311.00

P:\JHPA\422-01 Condi Building\ACAD\JHPA.dwg, 2016.07.11, Window Types.dwg

422 WEST BROADWAY: DRAWINGS: WINDOW DETAILS



JHPA
JAN HIRD POKORNY ASSOCIATES
TELEPHONE 312-758-6442 FACSIMILE 312-759-7850

Condi Building
Building Restoration
422 West Broadway
New York, NY

DRAWING PREPARED BY JAN HIRD POKORNY ASSOCIATES, INC./JHPA, AN HIR POKORNY ASSOCIATES, INC. COMPANY.
ALL DIMENSIONS MUST BE VERIFIED BY CONTRACTOR AND THE ARCHITECT MUST BE ADVISED OF ANY DISCREPANCIES, PROBLEMS AND THE CONSTRUCTION. DO NOT SCALE DRAWINGS.
JHPA JOB NO. 493-01

Drawing Title

WINDOW DETAILS

Date: 10 July 2018

Revisions		
No.	Date	Description

Drawing No.
A-400.00

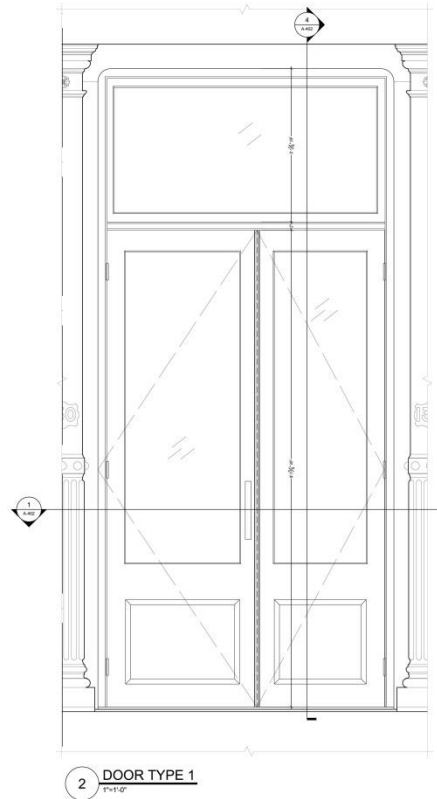
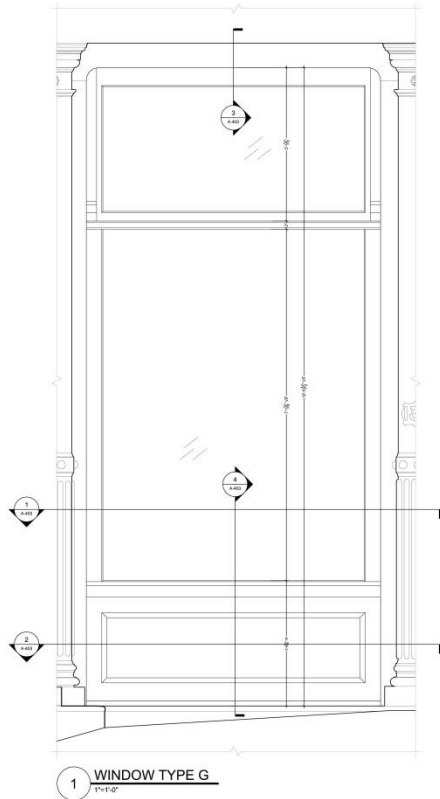
R:\1\2018\493-01 CONDI Building\CD01\JHPA_S&P\A-400_Window_Details.dwg

422 WEST BROADWAY:
HISTORIC REFERENCE: STOREFRONT



422 WEST BROADWAY: DRAWINGS: STOREFRONT DETAILS

W:\025\494-01 COND. BUILDING\CAD\JHPA_Sep\A-312 Storefront, Window, & Door Types.dwg



JHPA
JAN HIRD POKORNY ASSOCIATES
ARCHITECTS, P.C. (LLC)
TELEPHONE 212.259.5442 FACSIMILE 212.259.5440

Condi Building
Building Restoration
422 West Broadway
New York, NY

DRAWING PREPARED BY JAN HIRD POKORNY ASSOCIATES, P.C. (LLC)/A. JAN HIRD POKORNY ASSOCIATES, INC.
ALL DIMENSIONS MUST BE VERIFIED BY CONTRACTOR AND THE ARCHITECT MUST BE NOTICED OF ANY DISCREPANCIES BEFORE PROCEEDING WITH THE CONSTRUCTION.
DO NOT SCALE DRAWINGS.
JHPA Job No. 473-01

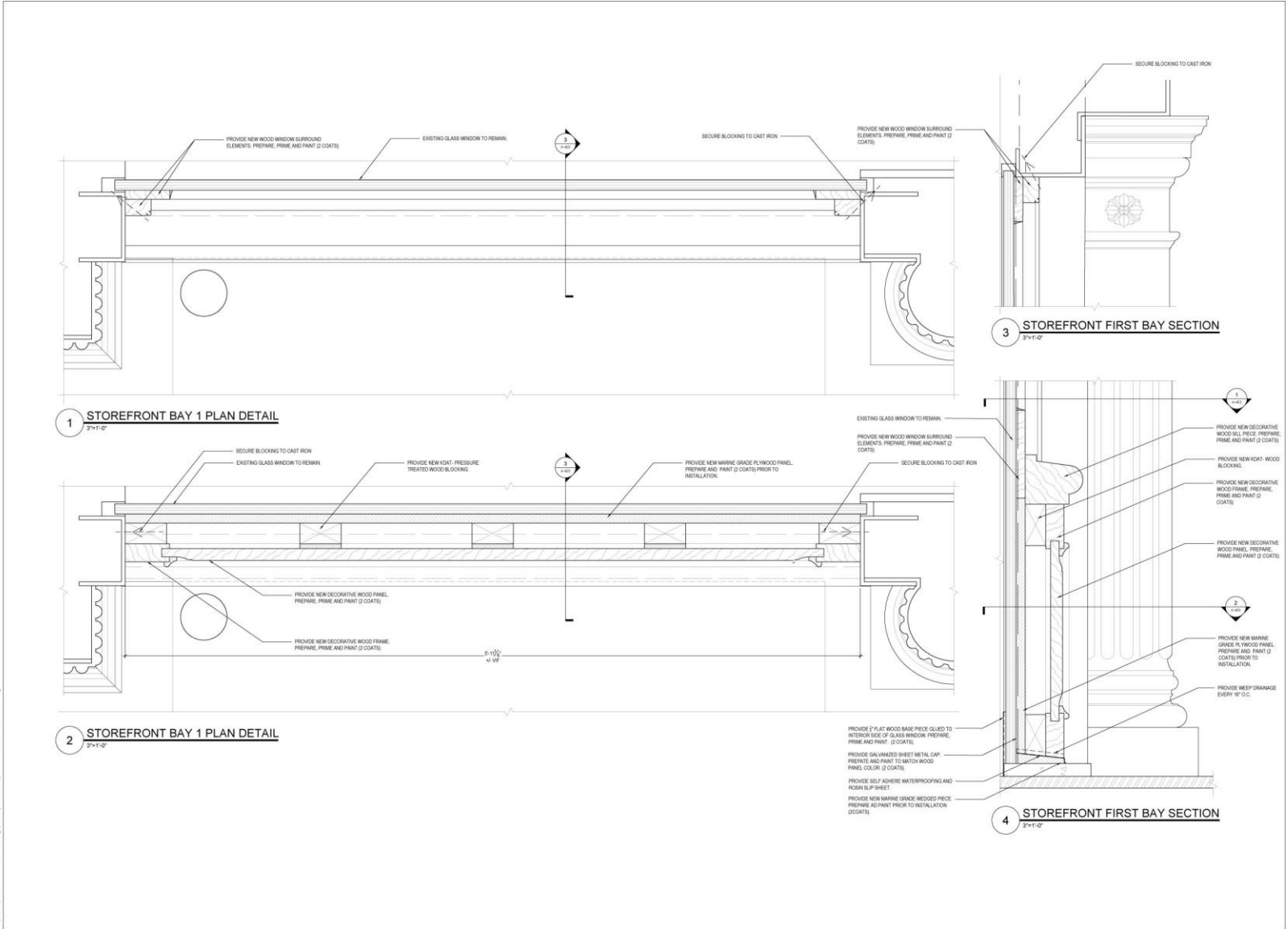
Drawing Title
STOREFRONT WINDOW & DOOR TYPES

Date: 10 July 2018

Revisions		
No.	Date	Description

Drawing No.
A-312.00

422 WEST BROADWAY: DRAWINGS: STOREFRONT DETAILS



JHPA
 JAN HIRD POKORNY ASSOCIATES
 ARCHITECTS
 TELEPHONE 313.758.4442 FACSIMILE 313.758.4540

Condi Building
 Building Restoration
 422 West Broadway
 New York, NY

DRAWING PREPARED BY JAN HIRD POKORNY ASSOCIATES, PC (JHPA) AND HED POKORNY ASSOCIATES, INC.
 ALL DIMENSIONS SHOWN ARE GOVERNED BY CONTRACT AND THE ARCHITECT MUST BE NOTICED OF ANY DISCREPANCIES BEFORE PROCEEDING WITH THE CONSTRUCTION. DO NOT SCALE DRAWINGS.
 JHPA JOB NO. 473-01

Drawing Title
 STOREFRONT
 DETAILS

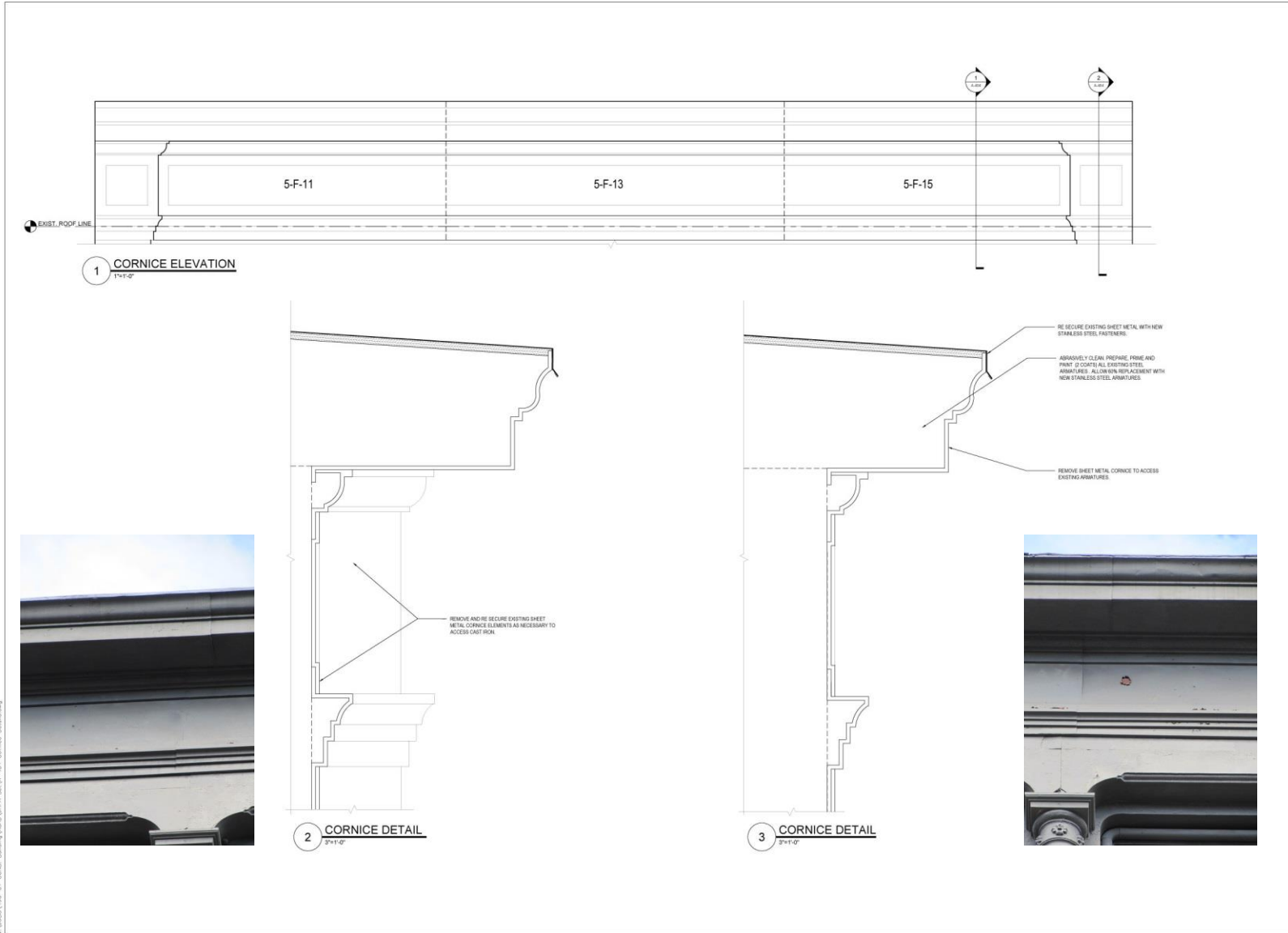
Date: 10 July 2018

Revisions		
No.	Date	Description

Drawing No.
A-403.00

W:\JHPA\403-01 - 422 West Broadway\403-01.dwg, 5/14/18, 4:13, Storefront - Details.dwg

422 WEST BROADWAY: DRAWINGS: CORNICE DETAILS



JHPA
JAN HIRD POKORNY ASSOCIATES
ARCHITECTS
TELEPHONE 212.759.4442 FACSIMILE 212.759.4540

Condi Building
Building Restoration
422 West Broadway
New York, NY

DRAWING PREPARED BY JAN HIRD POKORNY
ARCHITECTS, P.C. (JHPA) AND HIRD POKORNY
ASSOCIATES, INC.

ALL DIMENSIONS MUST BE VERIFIED BY
CONTRACTOR AND THE ARCHITECT MUST BE
NOTIFIED OF ANY DISCREPANCIES BEFORE
PROCEEDING WITH THE CONSTRUCTION.
DO NOT SCALE DRAWINGS.
JHPA JOB NO. A-404-00

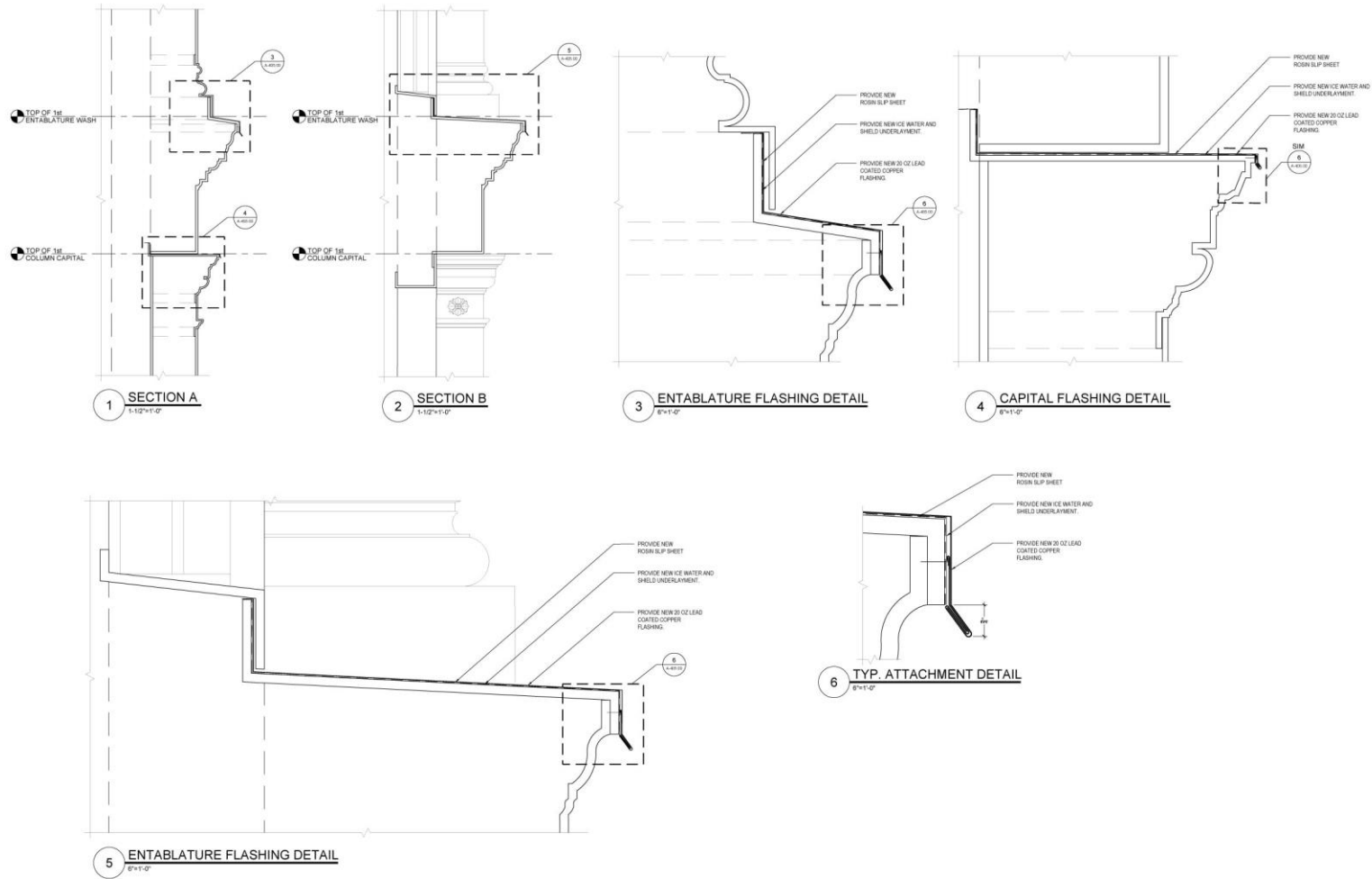
Drawing Title
**CORNICE
DETAILS**

Date: 10 July 2018

Revisions	No.	Date	Description

Drawing No.
A-404.00

422 WEST BROADWAY: DRAWINGS: SHEET METAL PROFILES



JHPA
JAN HIRD POKORNY ASSOCIATES
10 WEST 37TH STREET, NEW YORK, NY 10018
TELEPHONE 212.759.6442 FACSIMILE 212.759.6540

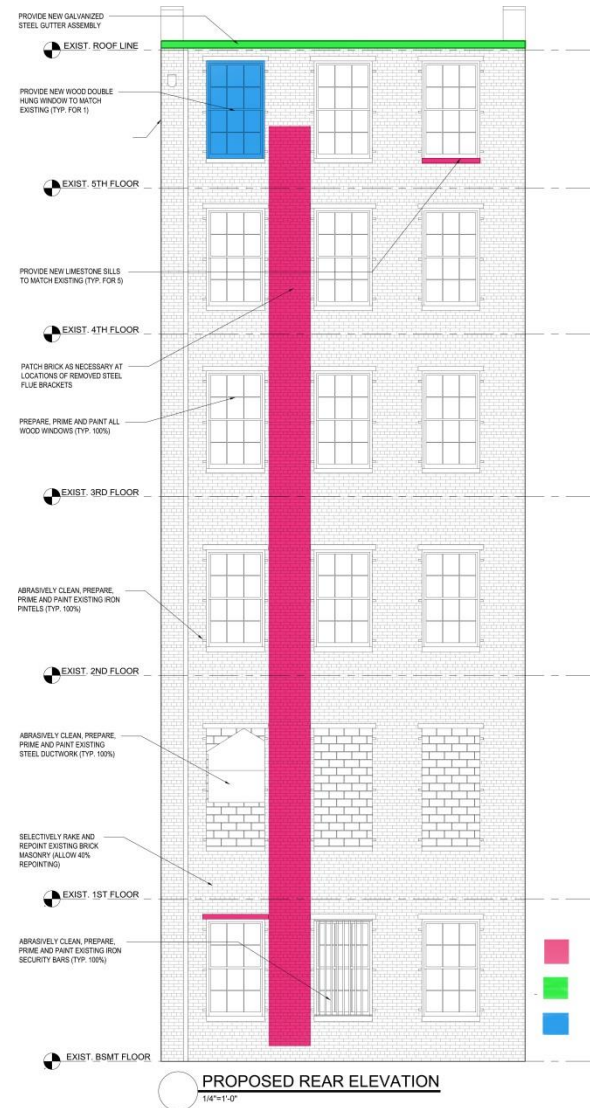
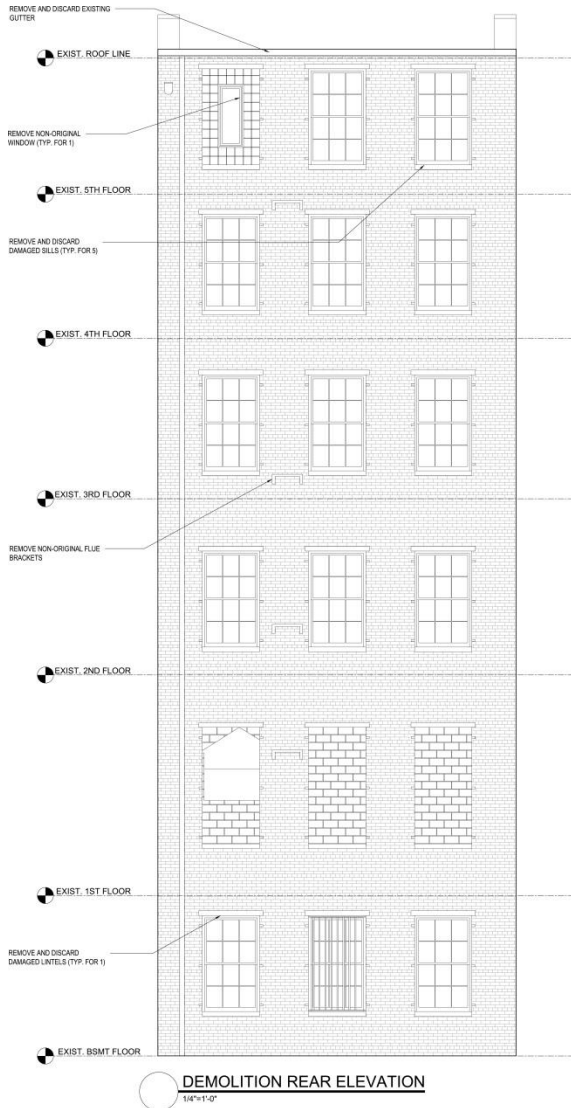
Condi Building
Building Restoration
422 West Broadway
New York, NY

DRAWING PREPARED BY: JAN HIRD POKORNY ARCHITECTS, INC./JHPA AND HBS POKORNY ASSOCIATES, INC.
ALL DIMENSIONS MUST BE VERIFIED BY CONTRACTOR AND THE ARCHITECT MUST BE NOTICED OF ANY DISCREPANCIES BEFORE PROCEEDING WITH THE CONSTRUCTION.
DO NOT SCALE DRAWINGS.
JHPA Job No. 473-01

Drawing Title		
FLASHING DETAILS		
Date: 10 July 2018		
Revisions:		
No.	Date	Description
Drawing No.		
A-405.00		

W:\JHPA\405-01 - Condi Building\ACAD\Drawings Set\A-405 Flashing Details.dwg

422 WEST BROADWAY: DRAWINGS: REAR FAÇADE DEMO AND PROPOSED



- Locations of Masonry Repair
- Locations of Sheet Metal Repair
- Locations of Window/Door Replacement

422 WEST BROADWAY: APPENDIX: PREVIOUS LPC APPROVALS FOR ROOFTOP ADDITIONS



61-63 Crosby Street



61-63 Crosby Street



151 Grand Street



151 Grand Street



143 Grand Street



203 Lafayette Street

422 WEST BROADWAY: APPENDIX: CAMERA INFORMATION



DATASHEET

AXIS P33 Network Camera Series

Fixed domes for any environment with remote focus and zoom.



- > Superb video quality including HDTV 1080p
- > Multiple H.264 video streams
- > Remote focus and zoom
- > Outdoor ready
- > Digital PTZ and multi-view streaming
- > P-Iris control

AXIS P33 Network Cameras constitute a series of indoor and outdoor-ready fixed domes. These cameras are ideal for unobtrusive video surveillance in exposed areas such as airports, subways, retail stores, schools and university campuses.

AXIS P33 Series offers models from SVGA resolution up to 3 megapixel, including support for HDTV 720p and 1080p in compliance with the SMPTE standard in resolution, color representation and frame rate. All models provide day and night functionality with removable infrared-cut filter for increased light sensitivity.

The remote focus feature allows for convenient installation eliminating the need for hands-on focusing at the camera, and the remote zoom and pixel counter features ensure that the camera's angle of view is optimized for the scene and pixel resolution.

AXIS P33 Series provides multiple, individually configurable H.264 and Motion JPEG video streams. All AXIS P33 cameras offer digital pan/tilt/zoom, and the 3-megapixel AXIS P3346 models additionally provide multi-view streaming.

AXIS P3346 cameras offer the unique and revolutionary P-Iris control, which allows the cameras to precisely control the iris position to optimize depth of field and lens resolution for optimal image sharpness.

AXIS P33 Series ranges from indoor cameras to vandal-resistant outdoor models, supplied by standard Power over Ethernet (IEEE 802.3af). Weather-proof models operate in temperatures from -40 °C to 55 °C (-40 °F to 131 °F).



Fixed domes designed for efficient installation – indoors or outdoors

AXIS P33 Series is the perfect choice for a wide range of demanding video applications in outdoor and indoor environments. AXIS P33 Network Cameras are designed for professional video surveillance with easy and reliable installation in focus.

Outdoor-ready installation for extreme temperatures

The outdoor models of AXIS P33 Series are specially designed for reliable, vandal-resistant and weather-proof installation, with pre-installed heater and fan, and an integrated dehumidifying membrane eliminating any humidity caught in the camera casing during installation. These cameras come with a 5 m (16 ft.) Ethernet cable with a pre-mounted, specially designed gasket, enabling flush wall mounting and requiring no additional sealant. A weather shield is also included for effective protection against reflections from sunlight, or build-ups of rain or snow.

Mounting options

AXIS P33 Series offers a wide range of optional kits for indoor and outdoor installations, for example, for mounting on a wall, pole or corner. The IP67-rated drop ceiling mount kit protects the camera from condensation and dust that may exist in the plenum space above the drop ceiling. Both indoor and outdoor

camera models include a smoked transparent cover as an alternative to the clear cover, for additional flexibility.

Easy installation with remote focus and zoom

AXIS P33 Network Cameras offer unique installation capabilities with remote focus and zoom. The remote focus feature enables convenient focusing over the network, eliminating the need for hands-on fine-tuning at the camera. The remote zoom functionality ensures that the viewing angle is optimized for the area to be monitored.

Unique pixel counter feature

The unique pixel counter offered in Axis cameras allows the installer to easily verify that the camera installation fulfills any regulatory or specific customer requirements, for example, calculating the pixel resolution of the face of a person passing a doorway monitored by the camera.



Unique pixel counter feature



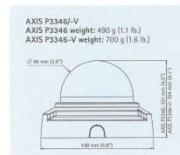
AXIS P3343-VE /P3344-VE
Weight: 1.6 kg (3.5 lb.) with weather shield



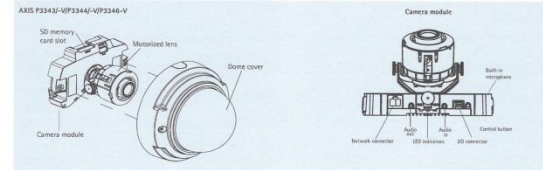
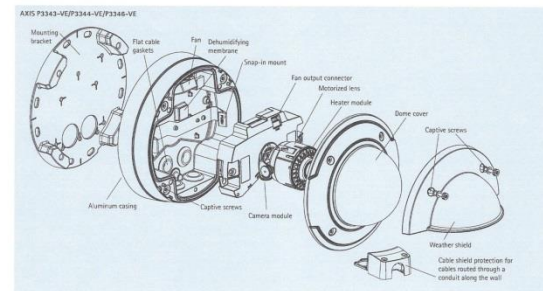
AXIS P3346-VE
Weight: 1.7 kg (3.7 lb.) with weather shield



AXIS P3343-VP/P3344-VP
AXIS P3343/P3344 weight: 450 g (1.0 lb.)
AXIS P3343-VP/P3344-VP weight: 660 g (1.5 lb.)



AXIS P3346-VP
AXIS P3346 weight: 490 g (1.1 lb.)
AXIS P3346-VP weight: 700 g (1.6 lb.)



For information on AXIS Camera Station and video management software from Axis' Application Development Partners, see www.axis.com/products/video/software

422 WEST BROADWAY: APPENDIX: CAST IRON REPAIR SCHEDULE

FIRST FLOOR CAST IRON SCHEDULE

FLOOR	CAST IRON UNIT NO.	ELEMENT	SUB-ELEMENT/CLASSIFICATION	CAST IRON CONDITION	PAINT CONDITION	SCOPE
1	1PR-1	SOUTH PIER	PEDESTAL	RUST STAINED, CRACKED	HEAVY PAINT BUILD-UP - PEELING FINISHES	REMOVE, ABRASIVELY CLEAN, PROVIDE DUTCHMAN REPAIR, AND REINST ALL ELEMENT. SECURE WITH NEW STAINLESS STEEL FASTENERS.
1	1PR-2	SOUTH PIER	BASE	RUST STAINED	HEAVY PAINT BUILD-UP - PEELING FINISHES	ABRASIVELY CLEAN ELEMENT IN-SITU
1	1PR-3	SOUTH PIER	SHAFT	SMALL HOLES FROM REMOVED FASTENERS, PAINT DAMAGE OR FAILING REPAIR AT CENTER OF UPPER PANEL	MINOR PAINT BUILD-UP - PEELING FINISHES	REMOVE, ABRASIVELY CLEAN, PATCH HOLES, REINST ALL ELEMENT WITH NEW STAINLESS STEEL FASTENERS
1	1PR-4	SOUTH PIER	CAPITAL	GAP AT LEFT CORNER ABOVE SHAFT, SMALL MISSING SECTION AT LEFT EDGE, CRACK AT RIGHT EDGE (UNDERSIDE)	HEAVY PAINT BUILD-UP - PEELING FINISHES	REMOVE, ABRASIVELY CLEAN, PROVIDE DUTCHMAN REPAIR, PROVIDE CRACK REPAIR, AND REINST ALL ELEMENT. SECURE WITH NEW STAINLESS STEEL FASTENERS.
1	1PR-5	NORTH PIER	SHAFT	GOOD	MINOR PAINT BUILD-UP - PEELING FINISHES	ABRASIVELY CLEAN ELEMENT IN-SITU
1	1PR-6	NORTH PIER	BASE	RUST STAINED	MINOR PAINT BUILD-UP - PEELING FINISHES	ABRASIVELY CLEAN ELEMENT IN-SITU
1	1PR-7	NORTH PIER	PEDESTAL	RUST STAINED	MINOR PAINT BUILD-UP - PEELING FINISHES	ABRASIVELY CLEAN ELEMENT IN-SITU
1	1PR-8	NORTH PIER	CAPITAL	GOOD	MINOR PAINT BUILD-UP - PEELING FINISHES	ABRASIVELY CLEAN ELEMENT IN-SITU
1	1PL-1-0	SOUTH PLASTER	BASE?	RUST STAINED	HEAVY PAINT BUILD-UP - PEELING FINISHES	ABRASIVELY CLEAN ELEMENT IN-SITU
1	1PL-1-1	SOUTH PLASTER	BASE	RUST STAINED	HEAVY PAINT BUILD-UP - PEELING FINISHES	ABRASIVELY CLEAN ELEMENT IN-SITU
1	1PL-1-2	SOUTH PLASTER	LOWER SHAFT	GOOD	MINOR PAINT BUILD-UP - PEELING FINISHES	ABRASIVELY CLEAN ELEMENT IN-SITU
1	1PL-1-3	SOUTH PLASTER	RING	GOOD	MINOR PAINT BUILD-UP - PEELING FINISHES	ABRASIVELY CLEAN ELEMENT IN-SITU
1	1PL-1-4	SOUTH PLASTER	UPPER SHAFT	GOOD	MINOR PAINT BUILD-UP - PEELING FINISHES	ABRASIVELY CLEAN ELEMENT IN-SITU
1	1PL-1-5	SOUTH PLASTER	CAPITAL	GOOD	MINOR PAINT BUILD-UP - PEELING FINISHES	ABRASIVELY CLEAN ELEMENT IN-SITU
1	1PL-2-0	NORTH PLASTER	PEDESTAL	RUST STAINED	MINOR PAINT BUILD-UP - PEELING FINISHES	ABRASIVELY CLEAN ELEMENT IN-SITU
1	1PL-2-1	NORTH PLASTER	BASE	RUST STAINED	MINOR PAINT BUILD-UP - PEELING FINISHES	ABRASIVELY CLEAN ELEMENT IN-SITU
1	1PL-2-2	NORTH PLASTER	LOWER SHAFT	GOOD	MINOR PAINT BUILD-UP - PEELING FINISHES	ABRASIVELY CLEAN ELEMENT IN-SITU
1	1PL-2-3	NORTH PLASTER	RING	GOOD	MINOR PAINT BUILD-UP - PEELING FINISHES	ABRASIVELY CLEAN ELEMENT IN-SITU
1	1PL-2-4	NORTH PLASTER	UPPER SHAFT	GOOD	MINOR PAINT BUILD-UP - PEELING FINISHES	ABRASIVELY CLEAN ELEMENT IN-SITU
1	1PL-2-5	NORTH PLASTER	CAPITAL	SLIGHTLY DISPLACED	MINOR PAINT BUILD-UP - PEELING FINISHES	REMOVE, ABRASIVELY CLEAN AND REINST ALL WITH NEW STAINLESS STEEL FASTENERS.
1	1C-1-0	SOUTH COLUMN	PEDESTAL	RUST STAINED	HEAVY PAINT BUILD-UP - PEELING FINISHES	ABRASIVELY CLEAN ELEMENT IN-SITU
1	1C-1-1	SOUTH COLUMN	BASE	RUST STAINED	HEAVY PAINT BUILD-UP - PEELING FINISHES	ABRASIVELY CLEAN ELEMENT IN-SITU
1	1C-1-2	SOUTH COLUMN	LOWER SHAFT	GOOD	MINOR PAINT BUILD-UP - PEELING FINISHES	ABRASIVELY CLEAN ELEMENT IN-SITU
1	1C-1-3	SOUTH COLUMN	RING	GOOD	MINOR PAINT BUILD-UP - PEELING FINISHES	ABRASIVELY CLEAN ELEMENT IN-SITU
1	1C-1-4	SOUTH COLUMN	UPPER SHAFT	SMALL HOLES FROM REMOVED FASTENERS	MINOR PAINT BUILD-UP - PEELING FINISHES	REMOVE, ABRASIVELY CLEAN, PATCH HOLE, REINST ALL ELEMENT WITH NEW STAINLESS STEEL FASTENERS
1	1C-1-5	SOUTH COLUMN	CAPITAL	CRACK AT TOP EDGE	HEAVY PAINT BUILD-UP - PEELING FINISHES	REMOVE, ABRASIVELY CLEAN, PROVIDE NEW CAST IRON ELEMENT SECURED WITH NEW STAINLESS STEEL FASTENERS.
1	1C-2-0	NORTH COLUMN	PEDESTAL	RUST STAINED	MINOR PAINT BUILD-UP - PEELING FINISHES	ABRASIVELY CLEAN ELEMENT IN-SITU
1	1C-2-1	NORTH COLUMN	BASE	RUST STAINED	MINOR PAINT BUILD-UP - PEELING FINISHES	ABRASIVELY CLEAN ELEMENT IN-SITU
1	1C-2-2	NORTH COLUMN	LOWER SHAFT	GOOD	MINOR PAINT BUILD-UP - PEELING FINISHES	ABRASIVELY CLEAN ELEMENT IN-SITU
1	1C-2-3	NORTH COLUMN	RING	GOOD	MINOR PAINT BUILD-UP - PEELING FINISHES	ABRASIVELY CLEAN ELEMENT IN-SITU
1	1C-2-4	NORTH COLUMN	UPPER SHAFT	GOOD	MINOR PAINT BUILD-UP - PEELING FINISHES	ABRASIVELY CLEAN ELEMENT IN-SITU
1	1C-2-5	NORTH COLUMN	CAPITAL	RUST, CRACKS AT TOP EDGE	HEAVY PAINT BUILD-UP - PEELING FINISHES	REMOVE, ABRASIVELY CLEAN, PROVIDE NEW CAST IRON ELEMENT SECURED WITH NEW STAINLESS STEEL FASTENERS.
1	1F-1	SOUTH JAMB	LEFT	RUST VISIBLE AT INSIDE (UNPAINTED) EDGE, SMALL CRACKED AND LOOSE SECTION	HEAVY PAINT BUILD-UP - PEELING FINISHES	REMOVE, ABRASIVELY CLEAN, PROVIDE NEW CAST IRON ELEMENT SECURED WITH NEW STAINLESS STEEL FASTENERS.
1	1F-2	SOUTH HEAD	N/A	GOOD	MINOR PAINT BUILD-UP - PEELING FINISHES	ABRASIVELY CLEAN ELEMENT IN-SITU
1	1F-3	SOUTH JAMB	RIGHT	GOOD	MINOR PAINT BUILD-UP - PEELING FINISHES	ABRASIVELY CLEAN ELEMENT IN-SITU
1	1F-4	CENTER JAMB	LEFT	STAINING FROM LEAK ABOVE	MINOR PAINT BUILD-UP - PEELING FINISHES	ABRASIVELY CLEAN ELEMENT IN-SITU
1	1F-5	CENTER HEAD	N/A	GOOD	MINOR PAINT BUILD-UP - PEELING FINISHES	ABRASIVELY CLEAN ELEMENT IN-SITU
1	1F-6	CENTER JAMB	RIGHT	GOOD	MINOR PAINT BUILD-UP - PEELING FINISHES	ABRASIVELY CLEAN ELEMENT IN-SITU
1	1F-7	NORTH JAMB	LEFT	SMALL HOLE FROM REMOVE FASTENER	MINOR PAINT BUILD-UP - PEELING FINISHES	REMOVE, ABRASIVELY CLEAN, PATCH HOLE, REINST ALL ELEMENT WITH NEW STAINLESS STEEL FASTENERS
1	1F-8	NORTH HEAD	N/A	GOOD	MINOR PAINT BUILD-UP - PEELING FINISHES	ABRASIVELY CLEAN ELEMENT IN-SITU
1	1F-9	NORTH JAMB	RIGHT	GOOD	MINOR PAINT BUILD-UP - PEELING FINISHES	ABRASIVELY CLEAN ELEMENT IN-SITU
1	1F-10	FASCIA	N/A	SLIGHT BULGE AT SEAM BETWEEN 1F-10 AND 1F-11	HEAVY PAINT BUILD-UP - PEELING FINISHES	REMOVE, ABRASIVELY CLEAN, PROVIDE NEW CAST IRON ELEMENT SECURED WITH NEW STAINLESS STEEL FASTENERS.
1	1F-11	FASCIA	N/A	SEE 1F-10 AND 1F-12	HEAVY PAINT BUILD-UP - PEELING FINISHES	REMOVE, ABRASIVELY CLEAN, PROVIDE NEW CAST IRON ELEMENT SECURED WITH NEW STAINLESS STEEL FASTENERS.
1	1F-12	FASCIA	N/A	CRACKS/BULGE AT SEAM BETWEEN 1F-11 AND 1F-12, POSSIBLE LEAKAGE, INAPPROPRIATE PREVIOUS REPAIR	HEAVY PAINT BUILD-UP - PEELING FINISHES	REMOVE, ABRASIVELY CLEAN, PROVIDE NEW CAST IRON ELEMENT SECURED WITH NEW STAINLESS STEEL FASTENERS.
1	1E-1	ENTABLATURE	LEFT	SMALL HOLE FROM REMOVED FASTENER, LEFT CORNER OF TOP EDGE IS SLIGHTLY BENT	HEAVY PAINT BUILD-UP - PEELING FINISHES	REMOVE, ABRASIVELY CLEAN, PATCH HOLE, REINST ALL ELEMENT WITH NEW STAINLESS STEEL FASTENERS
1	1E-2	ENTABLATURE	CENTER	DAMAGE FROM LEAKAGE AT SEAM BETWEEN 1E-2 AND 1E-3	HEAVY PAINT BUILD-UP - PEELING FINISHES	REMOVE, ABRASIVELY CLEAN, PROVIDE DUTCHMAN REPAIR, AND REINST ALL ELEMENT. SECURE WITH NEW STAINLESS STEEL FASTENERS.
1	1E-3	ENTABLATURE	RIGHT	SEE 1E-2	HEAVY PAINT BUILD-UP - PEELING FINISHES	REMOVE, ABRASIVELY CLEAN, PROVIDE DUTCHMAN REPAIR, AND REINST ALL ELEMENT. SECURE WITH NEW STAINLESS STEEL FASTENERS.

JHPA
JAN HIRD POKORNY ASSOCIATES
30 WOODSTOCK STREET, NEW YORK, NY 10019
TELEPHONE: 212.693.8333 FAX: 212.770.0100

Condi Building
Building Restoration
422 West Broadway
New York, NY

DRAWING PREPARED BY JAN HIRD POKORNY ASSOCIATES, INC. (JHPA) JAN HIRD POKORNY ASSOCIATES, INC.
ALL DIMENSIONS MUST BE VERIFIED BY CONTRACTOR AND THE ARCHITECT MUST BE ADVISED OF ANY DISCREPANCIES BEFORE PROCEEDING WITH THE CONSTRUCTION. DO NOT SCALE DRAWINGS.
JHPA Job No. 473-01

Drawing Title

**FIRST FLOOR
CAST IRON
SCHEDULE**

Date: 10 July 2018

Revisions	No.	Date	Description

Drawing No.

A-302.00

422 WEST BROADWAY: APPENDIX: CAST IRON REPAIR SCHEDULE

SECOND FLOOR CAST IRON SCHEDULE

FLOOR	CAST IRON UNIT NO.	ELEMENT	SUB-ELEMENT/CLASSIFICATION	CAST IRON CONDITION	PAINT CONDITION	SCOPE
2	2PR-1	SOUTH PIER	N/A	GOOD	MINOR PAINT BUILD-UP - MINOR MECH. DAMAGE	ABRASIVELY CLEAN ELEMENT IN-SITU
2	2PR-2	SOUTH PIER	CAPITAL	GOOD	MINOR PAINT BUILD-UP - MINOR MECH. DAMAGE	ABRASIVELY CLEAN ELEMENT IN-SITU
2	2PR-3	NORTH PIER	N/A	GOOD	MINOR PAINT BUILD-UP - MINOR MECH. DAMAGE	ABRASIVELY CLEAN ELEMENT IN-SITU
2	2PR-4	NORTH PIER	CAPITAL	GOOD	MINOR PAINT BUILD-UP - MINOR MECH. DAMAGE	ABRASIVELY CLEAN ELEMENT IN-SITU
2	2PL-1.1	SOUTH PILASTER	BASE	GOOD	MINOR PAINT BUILD-UP - MINOR MECH. DAMAGE	ABRASIVELY CLEAN ELEMENT IN-SITU
2	2PL-1.2	SOUTH PILASTER	LOWER SHAFT	GOOD	MINOR PAINT BUILD-UP - MINOR MECH. DAMAGE	ABRASIVELY CLEAN ELEMENT IN-SITU
2	2PL-1.3	SOUTH PILASTER	RING	GOOD	MINOR PAINT BUILD-UP - MINOR MECH. DAMAGE	ABRASIVELY CLEAN ELEMENT IN-SITU
2	2PL-1.4	SOUTH PILASTER	UPPER SHAFT	GOOD	MINOR PAINT BUILD-UP - MINOR MECH. DAMAGE	ABRASIVELY CLEAN ELEMENT IN-SITU
2	2PL-1.5	SOUTH PILASTER	CAPITAL	GOOD	MINOR PAINT BUILD-UP - MINOR MECH. DAMAGE	ABRASIVELY CLEAN ELEMENT IN-SITU
2	2PL-2.1	NORTH PILASTER	BASE	GOOD	MINOR PAINT BUILD-UP - MINOR MECH. DAMAGE	ABRASIVELY CLEAN ELEMENT IN-SITU
2	2PL-2.2	NORTH PILASTER	LOWER SHAFT	GOOD	MINOR PAINT BUILD-UP - MINOR MECH. DAMAGE	ABRASIVELY CLEAN ELEMENT IN-SITU
2	2PL-2.3	NORTH PILASTER	RING	GOOD	MINOR PAINT BUILD-UP - MINOR MECH. DAMAGE	ABRASIVELY CLEAN ELEMENT IN-SITU
2	2PL-2.4	NORTH PILASTER	UPPER SHAFT	GOOD	MINOR PAINT BUILD-UP - MINOR MECH. DAMAGE	ABRASIVELY CLEAN ELEMENT IN-SITU
2	2PL-2.5	NORTH PILASTER	CAPITAL	GOOD	MINOR PAINT BUILD-UP - MINOR MECH. DAMAGE	ABRASIVELY CLEAN ELEMENT IN-SITU
2	2C-1.1	SOUTH COLUMN	BASE	GOOD	MINOR PAINT BUILD-UP - MINOR MECH. DAMAGE	ABRASIVELY CLEAN ELEMENT IN-SITU
2	2C-1.2	SOUTH COLUMN	LOWER SHAFT	GOOD	MINOR PAINT BUILD-UP - MINOR MECH. DAMAGE	ABRASIVELY CLEAN ELEMENT IN-SITU
2	2C-1.3	SOUTH COLUMN	RING	GOOD	MINOR PAINT BUILD-UP - MINOR MECH. DAMAGE	ABRASIVELY CLEAN ELEMENT IN-SITU
2	2C-1.4	SOUTH COLUMN	UPPER SHAFT	GOOD	MINOR PAINT BUILD-UP - MINOR MECH. DAMAGE	ABRASIVELY CLEAN ELEMENT IN-SITU
2	2C-1.5	SOUTH COLUMN	CAPITAL	GOOD	MINOR PAINT BUILD-UP - MINOR MECH. DAMAGE	ABRASIVELY CLEAN ELEMENT IN-SITU
2	2C-2.1	NORTH COLUMN	BASE	GOOD	MINOR PAINT BUILD-UP - MINOR MECH. DAMAGE	ABRASIVELY CLEAN ELEMENT IN-SITU
2	2C-2.2	NORTH COLUMN	LOWER SHAFT	GOOD	MINOR PAINT BUILD-UP - MINOR MECH. DAMAGE	ABRASIVELY CLEAN ELEMENT IN-SITU
2	2C-2.3	NORTH COLUMN	RING	GOOD	MINOR PAINT BUILD-UP - MINOR MECH. DAMAGE	ABRASIVELY CLEAN ELEMENT IN-SITU
2	2C-2.4	NORTH COLUMN	UPPER SHAFT	GOOD	MINOR PAINT BUILD-UP - MINOR MECH. DAMAGE	ABRASIVELY CLEAN ELEMENT IN-SITU
2	2C-2.5	NORTH COLUMN	CAPITAL	WATER LEAKAGE AROUND BASE OF SHEET METAL CAP - LEAK ABOVE	MINOR PAINT BUILD-UP - MINOR MECH. DAMAGE	ABRASIVELY CLEAN ELEMENT IN-SITU
2	2F-1	LEFT JAMB	LEFT	CRACKED - MISSING PIECE AT TOP EDGE	MINOR PAINT BUILD-UP - MINOR MECH. DAMAGE	REMOVE, ABRASIVELY CLEAN, PROVIDE NEW CAST IRON ELEMENT SECURED WITH NEW STAINLESS STEEL FASTENERS.
2	2F-2	LEFT HEAD	N/A	GOOD	MINOR PAINT BUILD-UP - MINOR MECH. DAMAGE	ABRASIVELY CLEAN ELEMENT IN-SITU
2	2F-3	LEFT JAMB	RIGHT	GOOD	MINOR PAINT BUILD-UP - MINOR MECH. DAMAGE	ABRASIVELY CLEAN ELEMENT IN-SITU
2	2F-4	CENTER JAMB	LEFT	GOOD	MINOR PAINT BUILD-UP - MINOR MECH. DAMAGE	ABRASIVELY CLEAN ELEMENT IN-SITU
2	2F-5	CENTER HEAD	N/A	GOOD	MINOR PAINT BUILD-UP - MINOR MECH. DAMAGE	ABRASIVELY CLEAN ELEMENT IN-SITU
2	2F-6	CENTER JAMB	RIGHT	GOOD	MINOR PAINT BUILD-UP - MINOR MECH. DAMAGE	ABRASIVELY CLEAN ELEMENT IN-SITU
2	2F-7	NORTH JAMB	LEFT	GOOD	MINOR PAINT BUILD-UP - MINOR MECH. DAMAGE	ABRASIVELY CLEAN ELEMENT IN-SITU
2	2F-8	NORTH HEAD	N/A	GOOD	MINOR PAINT BUILD-UP - MINOR MECH. DAMAGE	ABRASIVELY CLEAN ELEMENT IN-SITU
2	2F-9	NORTH JAMB	RIGHT	GOOD	MINOR PAINT BUILD-UP - MINOR MECH. DAMAGE	ABRASIVELY CLEAN ELEMENT IN-SITU
2	2F-10	FASCIA	N/A	CRACKED AND MISSING PIECE AT LOWER LEFT EDGE	MINOR PAINT BUILD-UP - MINOR MECH. DAMAGE	REMOVE, ABRASIVELY CLEAN, PROVIDE NEW CAST IRON ELEMENT SECURED WITH NEW STAINLESS STEEL FASTENERS.
2	2F-11	FASCIA	N/A	CRACKS AT LEFT AND RIGHT LOWER EDGES	MINOR PAINT BUILD-UP - MINOR MECH. DAMAGE	REMOVE, ABRASIVELY CLEAN, PROVIDE NEW CAST IRON ELEMENT SECURED WITH NEW STAINLESS STEEL FASTENERS.
2	2F-12	FASCIA	N/A	2 CRACKS AT LOWER LEFT EDGE - ONE CRACK AT UPPER RIGHT EDGE - ONE CRACK AT LOWER RIGHT EDGE	MINOR PAINT BUILD-UP - MINOR MECH. DAMAGE	REMOVE, ABRASIVELY CLEAN, PROVIDE NEW CAST IRON ELEMENT SECURED WITH NEW STAINLESS STEEL FASTENERS.
2	2E-1	ENTABLATURE	LEFT	GOOD	HEAVY PAINT BUILD-UP - PEELING FINISHES	ABRASIVELY CLEAN ELEMENT IN-SITU
2	2E-2	ENTABLATURE	CENTER	GOOD	HEAVY PAINT BUILD-UP - PEELING FINISHES	ABRASIVELY CLEAN ELEMENT IN-SITU
2	2E-3	ENTABLATURE	RIGHT	GOOD	HEAVY PAINT BUILD-UP - PEELING FINISHES	ABRASIVELY CLEAN ELEMENT IN-SITU

W:\2025\464-01_COND Building\ACAD\work_sheets\204_Schedule_Floor_Elevation_Cast_Iron_Schedule.dwg

JHPA
JAN HIRD POKORNY ASSOCIATES
35 WEST 37TH STREET, NEW YORK, NY 10018
TELEPHONE 212.759.4442 FACSIMILE 212.759.4850

Condi Building
Building Restoration
422 West Broadway
New York, NY

DRAWING PREPARED BY: JAN HIRD POKORNY
ASSOCIATES, INC. (JHPA) AND HIRD POKORNY
ASSOCIATES, INC. (HPA). ALL DIMENSIONS MUST BE
OBTAINED FROM THE DRAWINGS AND NOT BE
BASED ON ANY INSTRUMENTS BEFORE
PROCEEDING WITH THE CONSTRUCTION.
DO NOT SCALE DRAWINGS.
JHPA, INC. FILE: 4172-01

Drawing Title
**SECOND FLOOR
CAST IRON
SCHEDULE**

Date: 10 July 2018

Revisions No.	Date	Description

Drawing No.
A-304.00

422 WEST BROADWAY: APPENDIX: CAST IRON REPAIR SCHEDULE

THIRD FLOOR CAST IRON SCHEDULE

FLOOR	CAST IRON UNIT NO.	ELEMENT	SUB-ELEMENT/CLASSIFICATION	CAST IRON CONDITION	PAINT CONDITION	SCOPE
3	3PR-1	SOUTH PIER	N/A	GOOD	MINOR PAINT BUILD-UP - MINOR MECH. DAMAGE	ABRASIVELY CLEAN ELEMENT IN-SITU
3	3PR-2	SOUTH PIER	CAPITAL	GOOD	MINOR PAINT BUILD-UP - MINOR MECH. DAMAGE	ABRASIVELY CLEAN ELEMENT IN-SITU
3	3PR-3	NORTH PIER	N/A	GOOD	MINOR PAINT BUILD-UP - MINOR MECH. DAMAGE	ABRASIVELY CLEAN ELEMENT IN-SITU
3	3PR-4	NORTH PIER	CAPITAL	GOOD	MINOR PAINT BUILD-UP - MINOR MECH. DAMAGE	ABRASIVELY CLEAN ELEMENT IN-SITU
3	3PL-1-1	SOUTH PILASTER	BASE	GOOD	MINOR PAINT BUILD-UP - MINOR MECH. DAMAGE	ABRASIVELY CLEAN ELEMENT IN-SITU
3	3PL-1-2	SOUTH PILASTER	LOWER SHAFT	GOOD	MINOR PAINT BUILD-UP - MINOR MECH. DAMAGE	ABRASIVELY CLEAN ELEMENT IN-SITU
3	3PL-1-3	SOUTH PILASTER	RING	GOOD	MINOR PAINT BUILD-UP - MINOR MECH. DAMAGE	ABRASIVELY CLEAN ELEMENT IN-SITU
3	3PL-1-4	SOUTH PILASTER	UPPER SHAFT	GOOD	MINOR PAINT BUILD-UP - MINOR MECH. DAMAGE	ABRASIVELY CLEAN ELEMENT IN-SITU
3	3PL-1-6	SOUTH PILASTER	CAPITAL	GOOD	MINOR PAINT BUILD-UP - MINOR MECH. DAMAGE	ABRASIVELY CLEAN ELEMENT IN-SITU
3	3PL-2-1	NORTH PILASTER	BASE	GOOD	MINOR PAINT BUILD-UP - MINOR MECH. DAMAGE	ABRASIVELY CLEAN ELEMENT IN-SITU
3	3PL-2-2	NORTH PILASTER	LOWER SHAFT	GOOD	MINOR PAINT BUILD-UP - MINOR MECH. DAMAGE	ABRASIVELY CLEAN ELEMENT IN-SITU
3	3PL-2-3	NORTH PILASTER	RING	GOOD	MINOR PAINT BUILD-UP - MINOR MECH. DAMAGE	ABRASIVELY CLEAN ELEMENT IN-SITU
3	3PL-2-4	NORTH PILASTER	UPPER SHAFT	GOOD	MINOR PAINT BUILD-UP - MINOR MECH. DAMAGE	ABRASIVELY CLEAN ELEMENT IN-SITU
3	3PL-2-6	NORTH PILASTER	CAPITAL	GOOD	MINOR PAINT BUILD-UP - MINOR MECH. DAMAGE	ABRASIVELY CLEAN ELEMENT IN-SITU
3	3C-1-1	SOUTH COLUMN	BASE	GOOD	MINOR PAINT BUILD-UP - MINOR MECH. DAMAGE	ABRASIVELY CLEAN ELEMENT IN-SITU
3	3C-1-2	SOUTH COLUMN	LOWER SHAFT	GOOD	MINOR PAINT BUILD-UP - MINOR MECH. DAMAGE	ABRASIVELY CLEAN ELEMENT IN-SITU
3	3C-1-3	SOUTH COLUMN	RING	GOOD	MINOR PAINT BUILD-UP - MINOR MECH. DAMAGE	ABRASIVELY CLEAN ELEMENT IN-SITU
3	3C-1-4	SOUTH COLUMN	UPPER SHAFT	GOOD	MINOR PAINT BUILD-UP - MINOR MECH. DAMAGE	ABRASIVELY CLEAN ELEMENT IN-SITU
3	3C-1-5	SOUTH COLUMN	CAPITAL	GOOD	MINOR PAINT BUILD-UP - MINOR MECH. DAMAGE	ABRASIVELY CLEAN ELEMENT IN-SITU
3	3C-2-1	NORTH COLUMN	BASE	GOOD	MINOR PAINT BUILD-UP - MINOR MECH. DAMAGE	ABRASIVELY CLEAN ELEMENT IN-SITU
3	3C-2-2	NORTH COLUMN	LOWER SHAFT	GOOD	MINOR PAINT BUILD-UP - MINOR MECH. DAMAGE	ABRASIVELY CLEAN ELEMENT IN-SITU
3	3C-2-3	NORTH COLUMN	RING	GOOD	MINOR PAINT BUILD-UP - MINOR MECH. DAMAGE	ABRASIVELY CLEAN ELEMENT IN-SITU
3	3C-2-4	NORTH COLUMN	UPPER SHAFT	GOOD	MINOR PAINT BUILD-UP - MINOR MECH. DAMAGE	ABRASIVELY CLEAN ELEMENT IN-SITU
3	3C-2-5	NORTH COLUMN	CAPITAL	GOOD	MINOR PAINT BUILD-UP - MINOR MECH. DAMAGE	ABRASIVELY CLEAN ELEMENT IN-SITU
3	3F-1	LEFT JAMB	LEFT	GOOD	MINOR PAINT BUILD-UP - MINOR MECH. DAMAGE	ABRASIVELY CLEAN ELEMENT IN-SITU
3	3F-2	LEFT HEAD	N/A	GOOD	MINOR PAINT BUILD-UP - MINOR MECH. DAMAGE	ABRASIVELY CLEAN ELEMENT IN-SITU
3	3F-3	LEFT JAMB	RIGHT	GOOD	MINOR PAINT BUILD-UP - MINOR MECH. DAMAGE	ABRASIVELY CLEAN ELEMENT IN-SITU
3	3F-4	CENTER JAMB	LEFT	GOOD	MINOR PAINT BUILD-UP - MINOR MECH. DAMAGE	ABRASIVELY CLEAN ELEMENT IN-SITU
3	3F-5	CENTER HEAD	N/A	GOOD	MINOR PAINT BUILD-UP - MINOR MECH. DAMAGE	ABRASIVELY CLEAN ELEMENT IN-SITU
3	3F-6	CENTER JAMB	RIGHT	GOOD	MINOR PAINT BUILD-UP - MINOR MECH. DAMAGE	ABRASIVELY CLEAN ELEMENT IN-SITU
3	3F-7	NORTH JAMB	LEFT	GOOD	MINOR PAINT BUILD-UP - MINOR MECH. DAMAGE	ABRASIVELY CLEAN ELEMENT IN-SITU
3	3F-8	NORTH HEAD	N/A	GOOD	MINOR PAINT BUILD-UP - MINOR MECH. DAMAGE	ABRASIVELY CLEAN ELEMENT IN-SITU
3	3F-9	NORTH JAMB	RIGHT	GOOD	MINOR PAINT BUILD-UP - MINOR MECH. DAMAGE	ABRASIVELY CLEAN ELEMENT IN-SITU
3	3F-10	FASCIA	N/A	CRACK AT LEFT LOWER EDGE	HEAVY PAINT BUILD-UP - PEELING FINISHES	REMOVE, ABRASIVELY CLEAN, PROVIDE NEW CAST IRON ELEMENT SECURED WITH NEW STAINLESS STEEL FASTENERS.
3	3F-11	FASCIA	N/A	CRACKS AT LEFT AND RIGHT LOWER EDGES	HEAVY PAINT BUILD-UP - PEELING FINISHES	REMOVE, ABRASIVELY CLEAN, PROVIDE NEW CAST IRON ELEMENT SECURED WITH NEW STAINLESS STEEL FASTENERS.
3	3F-12	FASCIA	N/A	CRACK AT LEFT LOWER EDGE - SIGNIFICANT CRACK AT RIGHT SIDE - LOOSE SECTION	HEAVY PAINT BUILD-UP - PEELING FINISHES	REMOVE, ABRASIVELY CLEAN, PROVIDE NEW CAST IRON ELEMENT SECURED WITH NEW STAINLESS STEEL FASTENERS.
3	3E-1	ENTABLATURE	LEFT	GOOD	HEAVY PAINT BUILD-UP - PEELING FINISHES	ABRASIVELY CLEAN ELEMENT IN-SITU
3	3E-2	ENTABLATURE	CENTER	GOOD	HEAVY PAINT BUILD-UP - PEELING FINISHES	ABRASIVELY CLEAN ELEMENT IN-SITU
3	3E-3	ENTABLATURE	RIGHT	HORIZ. CRACK AT RIGHT SIDE (APPROX 1'-0") - LARGE GAP AT RIGHT EDGE	HEAVY PAINT BUILD-UP - PEELING FINISHES	REMOVE, ABRASIVELY CLEAN, PROVIDE NEW CAST IRON ELEMENT SECURED WITH NEW STAINLESS STEEL FASTENERS.

JHPA
JAN HIRD POKORNY ASSOCIATES
34 WEST 37TH STREET, NEW YORK, NY 10018
TELEPHONE 312-259-6462 FACSIMILE 312-259-6460

Conditi Building
Building Restoration
422 West Broadway
New York, NY

DRAWING PREPARED BY: JAN HIRD POKORNY ARCHITECTS, P.C. (JHPA) JAN HIRD POKORNY ASSOCIATES, INC.
ALL DIMENSIONS MUST BE VERIFIED BY CONTRACTOR AND THE CONTRACTOR MUST BE PROCEEDING WITH THE CONSTRUCTION. DO NOT SCALE DRAWINGS.
JHPA Job No. 413-01

Drawing Title
**THIRD FLOOR
CAST IRON
SCHEDULE**

Date: 10 July 2018

Revisions		
No.	Date	Description

Drawing No.
A-306.00

W:\3059\422WB-01_COND Building\ACAD\JHPA_S&VA-306_Third Floor Restoration Cast Iron Schedule.dwg

422 WEST BROADWAY: APPENDIX: CAST IRON REPAIR SCHEDULE

FOURTH FLOOR CAST IRON SCHEDULE

FLOOR	CAST IRON UNIT NO.	ELEMENT	SUB-ELEMENT/CLASSIFICATION	CAST IRON CONDITION	PAINT CONDITION	SCOPE
4	4PR-1	SOUTH PIER	N/A	GOOD	HEAVY PAINT BUILD-UP - PEELING FINISHES	ABRASIVELY CLEAN ELEMENT IN-SITU
4	4PR-2	SOUTH PIER	CAPITAL	GOOD	HEAVY PAINT BUILD-UP - PEELING FINISHES	ABRASIVELY CLEAN ELEMENT IN-SITU
4	4PR-3	NORTH PIER	N/A	GOOD	HEAVY PAINT BUILD-UP - PEELING FINISHES	ABRASIVELY CLEAN ELEMENT IN-SITU
4	4PR-4	NORTH PIER	CAPITAL	GOOD	HEAVY PAINT BUILD-UP - PEELING FINISHES	ABRASIVELY CLEAN ELEMENT IN-SITU
4	4PL-1.1	SOUTH PILASTER	BASE	GOOD	HEAVY PAINT BUILD-UP - PEELING FINISHES	ABRASIVELY CLEAN ELEMENT IN-SITU
4	4PL-1.2	SOUTH PILASTER	LOWER SHAFT	GOOD	HEAVY PAINT BUILD-UP - PEELING FINISHES	ABRASIVELY CLEAN ELEMENT IN-SITU
4	4PL-1.3	SOUTH PILASTER	RING	GOOD	HEAVY PAINT BUILD-UP - PEELING FINISHES	ABRASIVELY CLEAN ELEMENT IN-SITU
4	4PL-1.4	SOUTH PILASTER	UPPER SHAFT	GOOD	HEAVY PAINT BUILD-UP - PEELING FINISHES	ABRASIVELY CLEAN ELEMENT IN-SITU
4	4PL-1.5	SOUTH PILASTER	CAPITAL	GOOD	HEAVY PAINT BUILD-UP - PEELING FINISHES	ABRASIVELY CLEAN ELEMENT IN-SITU
4	4PL-2.1	NORTH PILASTER	BASE	GOOD	HEAVY PAINT BUILD-UP - PEELING FINISHES	ABRASIVELY CLEAN ELEMENT IN-SITU
4	4PL-2.2	NORTH PILASTER	LOWER SHAFT	GOOD	HEAVY PAINT BUILD-UP - PEELING FINISHES	ABRASIVELY CLEAN ELEMENT IN-SITU
4	4PL-2.3	NORTH PILASTER	RING	GOOD	HEAVY PAINT BUILD-UP - PEELING FINISHES	ABRASIVELY CLEAN ELEMENT IN-SITU
4	4PL-2.4	NORTH PILASTER	UPPER SHAFT	GOOD	HEAVY PAINT BUILD-UP - PEELING FINISHES	ABRASIVELY CLEAN ELEMENT IN-SITU
4	4PL-2.5	NORTH PILASTER	CAPITAL	GOOD	HEAVY PAINT BUILD-UP - PEELING FINISHES	ABRASIVELY CLEAN ELEMENT IN-SITU
4	4C-1-1	SOUTH COLUMN	BASE	GOOD	HEAVY PAINT BUILD-UP - PEELING FINISHES	ABRASIVELY CLEAN ELEMENT IN-SITU
4	4C-1-2	SOUTH COLUMN	LOWER SHAFT	GOOD	HEAVY PAINT BUILD-UP - PEELING FINISHES	ABRASIVELY CLEAN ELEMENT IN-SITU
4	4C-1-3	SOUTH COLUMN	RING	GOOD	HEAVY PAINT BUILD-UP - PEELING FINISHES	ABRASIVELY CLEAN ELEMENT IN-SITU
4	4C-1-4	SOUTH COLUMN	UPPER SHAFT	GOOD	HEAVY PAINT BUILD-UP - PEELING FINISHES	ABRASIVELY CLEAN ELEMENT IN-SITU
4	4C-1-5	SOUTH COLUMN	CAPITAL	GOOD	HEAVY PAINT BUILD-UP - PEELING FINISHES	ABRASIVELY CLEAN ELEMENT IN-SITU
4	4C-2-1	NORTH COLUMN	BASE	GOOD	HEAVY PAINT BUILD-UP - PEELING FINISHES	ABRASIVELY CLEAN ELEMENT IN-SITU
4	4C-2-2	NORTH COLUMN	LOWER SHAFT	GOOD	HEAVY PAINT BUILD-UP - PEELING FINISHES	ABRASIVELY CLEAN ELEMENT IN-SITU
4	4C-2-3	NORTH COLUMN	RING	GOOD	HEAVY PAINT BUILD-UP - PEELING FINISHES	ABRASIVELY CLEAN ELEMENT IN-SITU
4	4C-2-4	NORTH COLUMN	UPPER SHAFT	GOOD	HEAVY PAINT BUILD-UP - PEELING FINISHES	ABRASIVELY CLEAN ELEMENT IN-SITU
4	4C-2-5	NORTH COLUMN	CAPITAL	WATER LEAKAGE AROUND BASE OF SHEET METAL CAP - LEAK ABOVE	HEAVY PAINT BUILD-UP - PEELING FINISHES	ABRASIVELY CLEAN ELEMENT IN-SITU
4	4F-1	LEFT JAMB	LEFT	FILLER VISIBLE - PREVIOUS REPAIR AT TOP	HEAVY PAINT BUILD-UP - PEELING FINISHES	REMOVE, ABRASIVELY CLEAN, PROVIDE DUT CHMAN REPAIR, AND REINSTATE ALL ELEMENT. SECURE WITH NEW STAINLESS STEEL FASTENERS.
4	4F-2	LEFT HEAD	N/A	FILLER VISIBLE - PREVIOUS REPAIR AT LEFT EDGE	HEAVY PAINT BUILD-UP - PEELING FINISHES	REMOVE, ABRASIVELY CLEAN, PROVIDE DUT CHMAN REPAIR, AND REINSTATE ALL ELEMENT. SECURE WITH NEW STAINLESS STEEL FASTENERS.
4	4F-3	LEFT JAMB	RIGHT	GOOD	HEAVY PAINT BUILD-UP - PEELING FINISHES	ABRASIVELY CLEAN ELEMENT IN-SITU
4	4F-4	CENTER JAMB	LEFT	GOOD	HEAVY PAINT BUILD-UP - PEELING FINISHES	ABRASIVELY CLEAN ELEMENT IN-SITU
4	4F-5	CENTER HEAD	N/A	GOOD	HEAVY PAINT BUILD-UP - PEELING FINISHES	ABRASIVELY CLEAN ELEMENT IN-SITU
4	4F-6	CENTER JAMB	RIGHT	GOOD	HEAVY PAINT BUILD-UP - PEELING FINISHES	ABRASIVELY CLEAN ELEMENT IN-SITU
4	4F-7	NORTH JAMB	LEFT	GOOD	HEAVY PAINT BUILD-UP - PEELING FINISHES	ABRASIVELY CLEAN ELEMENT IN-SITU
4	4F-8	NORTH HEAD	N/A	CRACKED AT TOP - LOOSE PIECE AT EDGE	HEAVY PAINT BUILD-UP - PEELING FINISHES	REMOVE, ABRASIVELY CLEAN, PROVIDE NEW CAST IRON ELEMENT SECURED WITH NEW STAINLESS STEEL FASTENERS.
4	4F-9	NORTH JAMB	RIGHT	GOOD	HEAVY PAINT BUILD-UP - PEELING FINISHES	ABRASIVELY CLEAN ELEMENT IN-SITU
4	4F-10	FASCIA	N/A	2 CRACKS AT RIGHT EDGE	HEAVY PAINT BUILD-UP - PEELING FINISHES	REMOVE, ABRASIVELY CLEAN, PROVIDE NEW CAST IRON ELEMENT SECURED WITH NEW STAINLESS STEEL FASTENERS.
4	4F-11	FASCIA	N/A	1 CRACK AT LEFT EDGE - 1 CRACK AT RIGHT EDGE - MISSING SECTION AT RIGHT EDGE	HEAVY PAINT BUILD-UP - PEELING FINISHES	REMOVE, ABRASIVELY CLEAN, PROVIDE NEW CAST IRON ELEMENT SECURED WITH NEW STAINLESS STEEL FASTENERS.
4	4F-12	FASCIA	N/A	2 CRACKS AT LEFT EDGE - LARGE GAP AT RIGHT SIDE	HEAVY PAINT BUILD-UP - PEELING FINISHES	REMOVE, ABRASIVELY CLEAN, PROVIDE NEW CAST IRON ELEMENT SECURED WITH NEW STAINLESS STEEL FASTENERS.
4	4E-1	ENTABLATURE	LEFT	CRACK (APPROX 6' LONG) AT RIGHT SIDE	HEAVY PAINT BUILD-UP - PEELING FINISHES	REMOVE, ABRASIVELY CLEAN, PROVIDE NEW CAST IRON ELEMENT SECURED WITH NEW STAINLESS STEEL FASTENERS.
4	4E-2	ENTABLATURE	CENTER	FILLER VISIBLE AT RIGHT SEAM - PREVIOUS REPAIR	HEAVY PAINT BUILD-UP - PEELING FINISHES	REMOVE, ABRASIVELY CLEAN, PROVIDE DUT CHMAN REPAIR, AND REINSTATE ALL ELEMENT. SECURE WITH NEW STAINLESS STEEL FASTENERS.
4	4E-3	ENTABLATURE	RIGHT	FILLER VISIBLE AT LEFT SEAM - PREVIOUS REPAIR	HEAVY PAINT BUILD-UP - PEELING FINISHES	REMOVE, ABRASIVELY CLEAN, PROVIDE DUT CHMAN REPAIR, AND REINSTATE ALL ELEMENT. SECURE WITH NEW STAINLESS STEEL FASTENERS.

W:\2025\444-01_CONS\Bulding\ACAD\Drawn_S&P\4-2025 Fourth Floor Restoration Cast Iron Schedule.dwg

JHPA
JAN HIRD POKORNY ASSOCIATES
100 WEST 42ND STREET, 10TH FLOOR
NEW YORK, NY 10018
TELEPHONE 212.759.0442 FACSIMILE 212.759.0450

Condi Building
Building Restoration
422 West Broadway
New York, NY

DRAWING PREPARED BY: JAN HIRD POKORNY
ARCHITECTS, P.C./JAN HIRD POKORNY
ASSOCIATES, INC.
ALL DIMENSIONS MUST BE CHECKED BY
CONTRACTOR AND THE SUBMITTER MUST BE
NOTIFIED OF ANY DISCREPANCIES BEFORE
PROCEEDING WITH THE CONSTRUCTION.
DO NOT SCALE DRAWINGS.
JHPA JOB NO. 444-01

Drawing Title
**FOURTH FLOOR
CAST IRON
SCHEDULE**

Date: 10 July 2018

Revisions	No.	Date	Description

Drawing No.
A-308.00

422 WEST BROADWAY: APPENDIX: CAST IRON REPAIR SCHEDULE

FIFTH FLOOR CAST IRON SCHEDULE

FLOOR	CAST IRON UNIT NO.	ELEMENT	SUB-ELEMENT/CLASSIFICATION	CAST IRON CONDITION	PAINT CONDITION	SCOPE
5	SPR-1	SOUTH PIER	N/A	GOOD	HEAVY PAINT BUILD-UP - PEELING FINISHES	ABRASIVELY CLEAN ELEMENT IN-SITU
5	SPR-2	NORTH PIER	N/A	GOOD	HEAVY PAINT BUILD-UP - PEELING FINISHES	ABRASIVELY CLEAN ELEMENT IN-SITU
5	SPL-1-1	SOUTH PILASTER	BASE	GOOD	HEAVY PAINT BUILD-UP - PEELING FINISHES	ABRASIVELY CLEAN ELEMENT IN-SITU
5	SPL-1-2	SOUTH PILASTER	LOWER SHAFT	GOOD	HEAVY PAINT BUILD-UP - PEELING FINISHES	ABRASIVELY CLEAN ELEMENT IN-SITU
5	SPL-1-3	SOUTH PILASTER	RING	GOOD	HEAVY PAINT BUILD-UP - PEELING FINISHES	ABRASIVELY CLEAN ELEMENT IN-SITU
5	SPL-1-4	SOUTH PILASTER	UPPER SHAFT	GOOD	HEAVY PAINT BUILD-UP - PEELING FINISHES	ABRASIVELY CLEAN ELEMENT IN-SITU
5	SPL-1-5	SOUTH PILASTER	CAPITAL	GOOD	HEAVY PAINT BUILD-UP - PEELING FINISHES	ABRASIVELY CLEAN ELEMENT IN-SITU
5	SPL-2-1	NORTH PILASTER	BASE	GOOD	HEAVY PAINT BUILD-UP - PEELING FINISHES	ABRASIVELY CLEAN ELEMENT IN-SITU
5	SPL-2-2	NORTH PILASTER	LOWER SHAFT	GOOD	HEAVY PAINT BUILD-UP - PEELING FINISHES	ABRASIVELY CLEAN ELEMENT IN-SITU
5	SPL-2-3	NORTH PILASTER	RING	GOOD	HEAVY PAINT BUILD-UP - PEELING FINISHES	ABRASIVELY CLEAN ELEMENT IN-SITU
5	SPL-2-4	NORTH PILASTER	UPPER SHAFT	GOOD	HEAVY PAINT BUILD-UP - PEELING FINISHES	ABRASIVELY CLEAN ELEMENT IN-SITU
5	SPL-2-5	NORTH PILASTER	CAPITAL	GOOD	HEAVY PAINT BUILD-UP - PEELING FINISHES	ABRASIVELY CLEAN ELEMENT IN-SITU
5	SC-1-1	SOUTH COLUMN	BASE	GOOD	HEAVY PAINT BUILD-UP - PEELING FINISHES	ABRASIVELY CLEAN ELEMENT IN-SITU
5	SC-1-2	SOUTH COLUMN	LOWER SHAFT	GOOD	HEAVY PAINT BUILD-UP - PEELING FINISHES	ABRASIVELY CLEAN ELEMENT IN-SITU
5	SC-1-3	SOUTH COLUMN	RING	GOOD	HEAVY PAINT BUILD-UP - PEELING FINISHES	ABRASIVELY CLEAN ELEMENT IN-SITU
5	SC-1-4	SOUTH COLUMN	UPPER SHAFT	GOOD	HEAVY PAINT BUILD-UP - PEELING FINISHES	ABRASIVELY CLEAN ELEMENT IN-SITU
5	SC-1-5	SOUTH COLUMN	CAPITAL	GOOD	HEAVY PAINT BUILD-UP - PEELING FINISHES	ABRASIVELY CLEAN ELEMENT IN-SITU
5	SC-2-1	NORTH COLUMN	BASE	GOOD	HEAVY PAINT BUILD-UP - PEELING FINISHES	ABRASIVELY CLEAN ELEMENT IN-SITU
5	SC-2-2	NORTH COLUMN	LOWER SHAFT	GOOD	HEAVY PAINT BUILD-UP - PEELING FINISHES	ABRASIVELY CLEAN ELEMENT IN-SITU
5	SC-2-3	NORTH COLUMN	RING	GOOD	HEAVY PAINT BUILD-UP - PEELING FINISHES	ABRASIVELY CLEAN ELEMENT IN-SITU
5	SC-2-4	NORTH COLUMN	UPPER SHAFT	GOOD	HEAVY PAINT BUILD-UP - PEELING FINISHES	ABRASIVELY CLEAN ELEMENT IN-SITU
5	SC-2-5	NORTH COLUMN	CAPITAL	GOOD	HEAVY PAINT BUILD-UP - PEELING FINISHES	ABRASIVELY CLEAN ELEMENT IN-SITU
5	5F-1	SOUTH JAMB	LEFT	GOOD	HEAVY PAINT BUILD-UP - PEELING FINISHES	ABRASIVELY CLEAN ELEMENT IN-SITU
5	5F-2	SOUTH HEAD	N/A	GOOD	HEAVY PAINT BUILD-UP - PEELING FINISHES	ABRASIVELY CLEAN ELEMENT IN-SITU
5	5F-3	SOUTH JAMB	RIGHT	GOOD	HEAVY PAINT BUILD-UP - PEELING FINISHES	ABRASIVELY CLEAN ELEMENT IN-SITU
5	5F-4	CENTER JAMB	LEFT	GOOD	HEAVY PAINT BUILD-UP - PEELING FINISHES	ABRASIVELY CLEAN ELEMENT IN-SITU
5	5F-5	CENTER HEAD	N/A	GOOD	HEAVY PAINT BUILD-UP - PEELING FINISHES	ABRASIVELY CLEAN ELEMENT IN-SITU
5	5F-6	CENTER JAMB	RIGHT	GOOD	HEAVY PAINT BUILD-UP - PEELING FINISHES	ABRASIVELY CLEAN ELEMENT IN-SITU
5	5F-7	NORTH JAMB	LEFT	GOOD	HEAVY PAINT BUILD-UP - PEELING FINISHES	ABRASIVELY CLEAN ELEMENT IN-SITU
5	5F-8	NORTH HEAD	N/A	GOOD	HEAVY PAINT BUILD-UP - PEELING FINISHES	ABRASIVELY CLEAN ELEMENT IN-SITU
5	5F-9	NORTH JAMB	RIGHT	GOOD	HEAVY PAINT BUILD-UP - PEELING FINISHES	ABRASIVELY CLEAN ELEMENT IN-SITU
5	5F-10	FASCIA	LOWER	CRACKED AND MISSING SECTION AT LOWER LEFT AND RIGHT EDGES	HEAVY PAINT BUILD-UP - PEELING FINISHES	REMOVE, ABRASIVELY CLEAN, PROVIDE DUT CHMAN REPAIR, AND REINSTALL ELEMENT. SECURE WITH NEW STAINLESS STEEL FAST ENERS.
5	5F-11	FASCIA	UPPER	GOOD	HEAVY PAINT BUILD-UP - PEELING FINISHES	ABRASIVELY CLEAN ELEMENT IN-SITU
5	5F-12	FASCIA	LOWER	CRACKED AND MISSING SECTION AT LOWER RIGHT EDGE	HEAVY PAINT BUILD-UP - PEELING FINISHES	REMOVE, ABRASIVELY CLEAN, PROVIDE DUT CHMAN REPAIR, AND REINSTALL ELEMENT. SECURE WITH NEW STAINLESS STEEL FAST ENERS.
5	5F-13	FASCIA	UPPER	GOOD	HEAVY PAINT BUILD-UP - PEELING FINISHES	ABRASIVELY CLEAN ELEMENT IN-SITU
5	5F-14	FASCIA	LOWER	CRACKED AND MISSING SECTION AT LOWER LEFT EDGE	HEAVY PAINT BUILD-UP - PEELING FINISHES	REMOVE, ABRASIVELY CLEAN, PROVIDE DUT CHMAN REPAIR, AND REINSTALL ELEMENT. SECURE WITH NEW STAINLESS STEEL FAST ENERS.
5	5F-15	FASCIA	UPPER	GOOD	HEAVY PAINT BUILD-UP - PEELING FINISHES	ABRASIVELY CLEAN ELEMENT IN-SITU

JHPA
JAN HIRD POKORNY ASSOCIATES
100 WEST BROADWAY, 15TH FLOOR
NEW YORK, NY 10038
TELEPHONE 212-758-9442 FACSIMILE 212-758-0540

Condi Building
Building Restoration
422 West Broadway
New York, NY

DRAWING PREPARED BY JAN HIRD POKORNY ASSOCIATES, INC. (JHPA) AND HER PARTNER ASSOCIATES, INC.
ALL DIMENSIONS MUST BE VERIFY BY CONTRACTOR AND THE PROJECT MUST BE PROCEED WITH THE CONSTRUCTION DO NOT SCALE DRAWINGS.
JHPA Job No. 473-01

Drawing Title

**FIFTH FLOOR
CAST IRON
SCHEDULE**

Date: 10 July 2018

Revisions

No.	Date	Description

Drawing No.

A-310.00

W:\2018\466-01_COND Building\ACAD\jhp\A-310-00.dwg Plot Date: 10/10/2018 10:48:48 AM